

Your Futaba update compatible servo programming can be updated easily online. When functions are improved, the update file can be downloaded from our website.

For more information, check out web site for FAQ regarding updating this product.

*The display screen is an example. The screen depends on the PC.

When using CIU-3 : Required for update

CIU-3

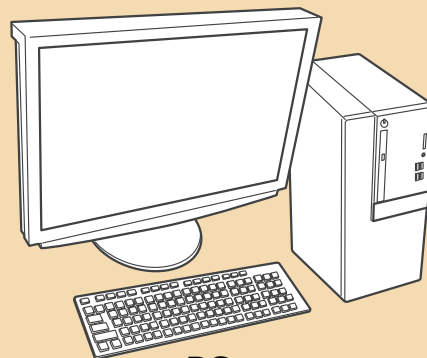
*CIU-2 cannot be used.



Receiver connection cord (DLPH-2 Included)



Battery for DLPH-2



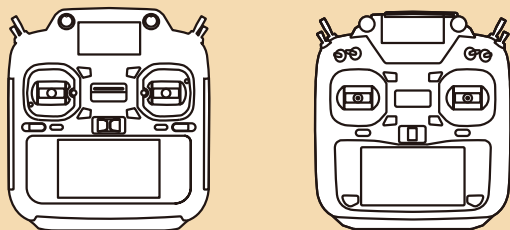
PC

(Access is possible by the web)

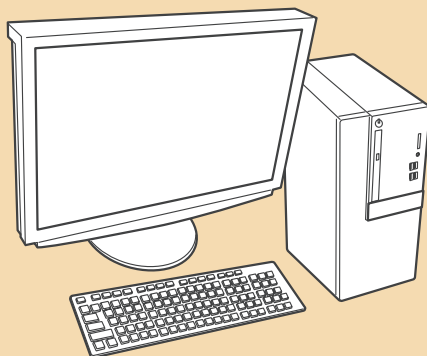
When using T26SZ or T16IZS(V4.0~) , T16IZ(V6.0~): Required for update



microSD



T26SZ or T16IZS(V4.0~), T16IZ(V6.0~)



PC

(Access is possible by the web)



Receiver connection cord (DLPH-2 Included)

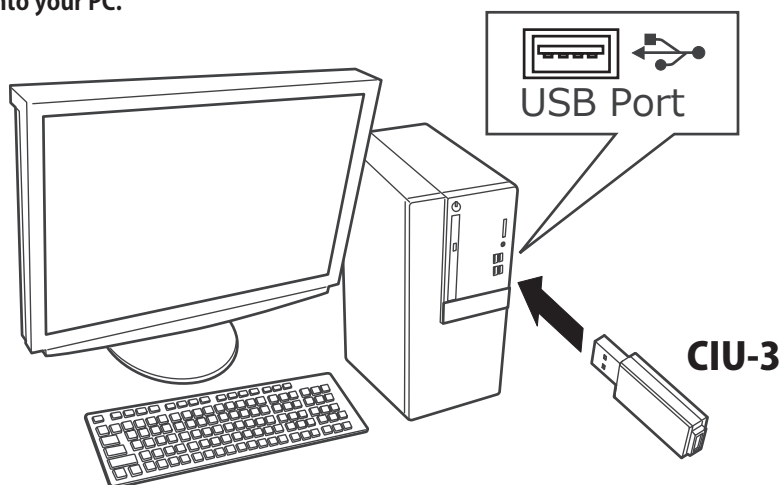
Battery for DLPH-2



When using CIU-3 : Update Procedure

Preparations

1. Install the driver for the CIU-3 onto your PC.



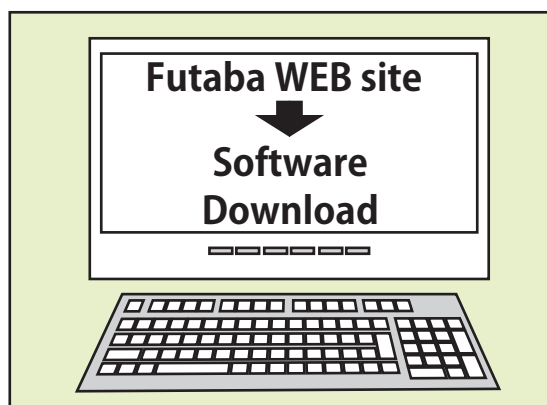
- ◆ When the **CIU-3** is first connected to the PC, once the CIU-3 is connected to the PC, download the recommended driver software Using depending on the PC, the "Found New Hardware Wizard" window appears on the screen. Click "Locate and install driver software".
- ◆ Refer to the manual of the CIU-3 for further information.

Updating procedure

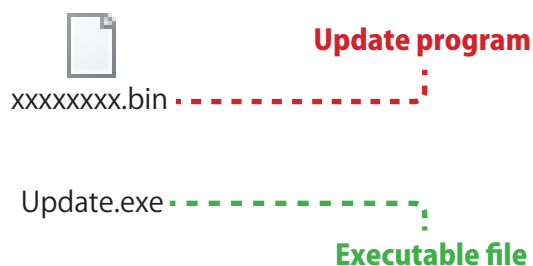
1. Download the zip file of the DLPH-2 update data from our website or your local distributor's website.

<https://www.rc.futaba.co.jp/>

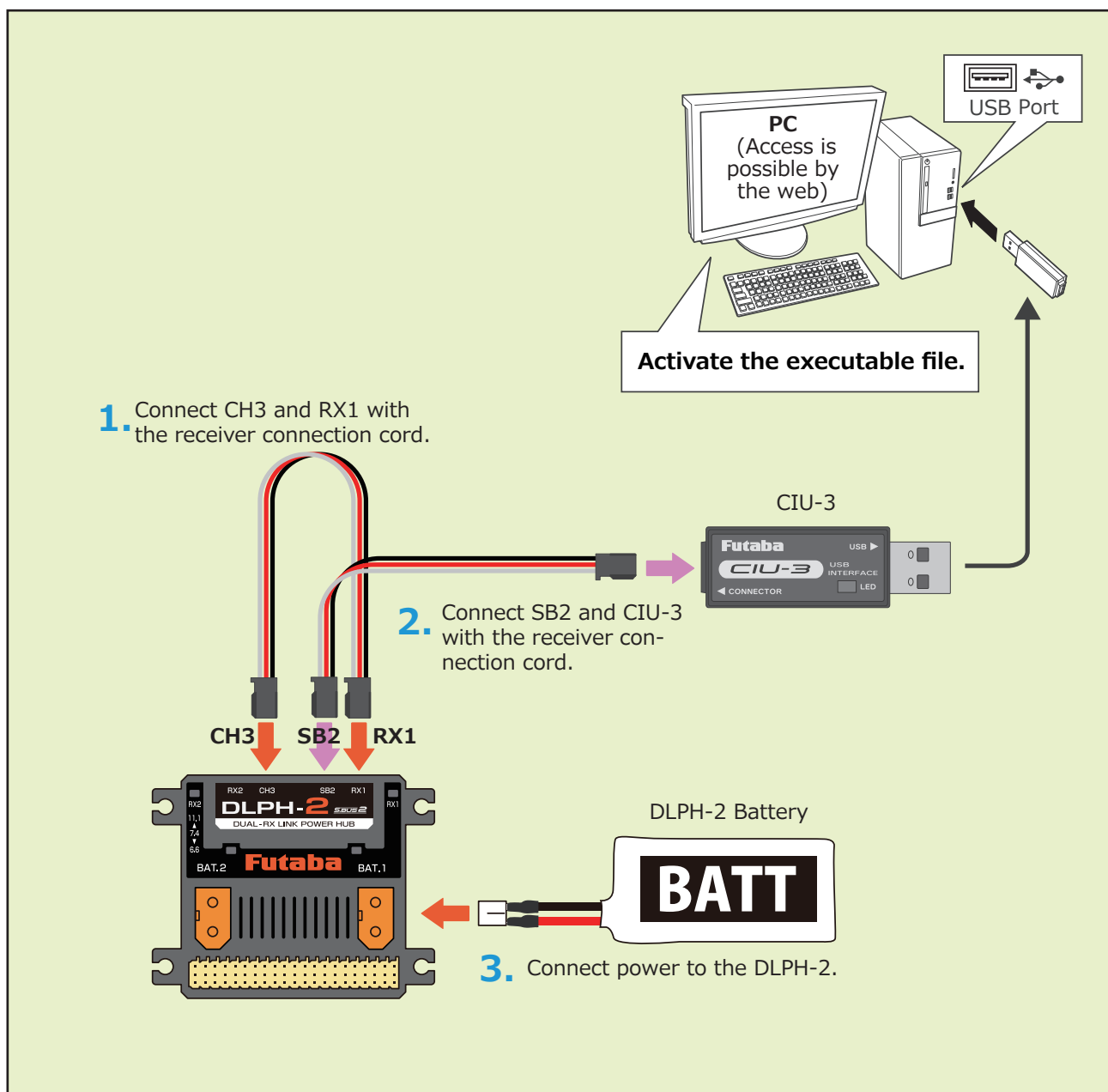
<https://futabausa.com>



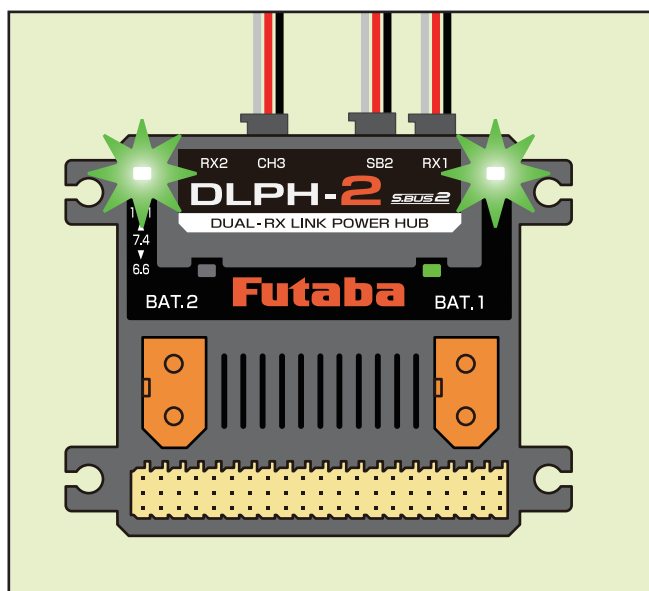
2. Extract the zip file on your computer.



3. Connect as shown in the figure.



4. Connect power to the DLPH-2, the RX1 and RX2 LEDs will light up green.



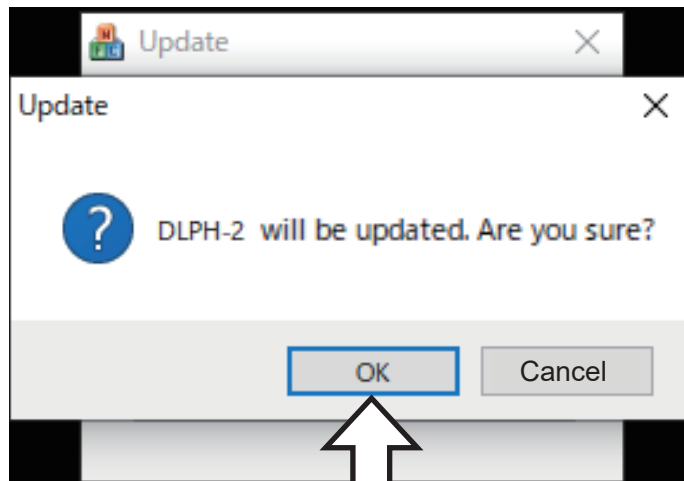
5. Operate the PC update.

xxxxxxx.bin

Update.exe



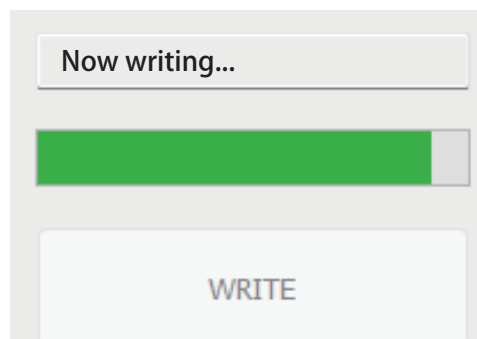
*Display content varies depending on PC



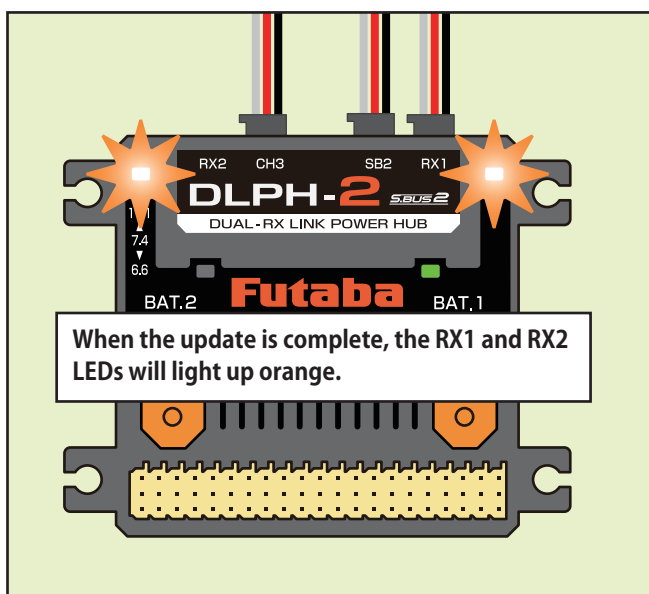
6. Click "OK".

Click

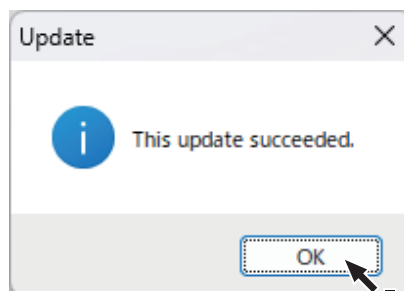
OK



The LED on the RX1 will flash while updating.



When the update is complete, the RX1 and RX2 LEDs will light up orange.



7. This completes the update process.

Click "OK" and then remove the cable.

When using T26SZ or T16IZS(V4.0~) , T16IZ(V6.0~) : Update Procedure

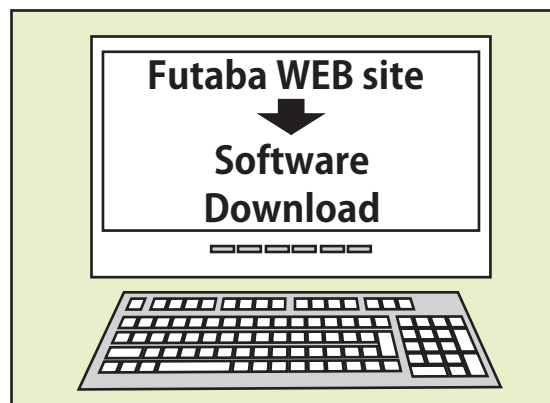
Preparations

1. Download the zip file of the DLPH-2 update data from our website or your local distributor's website.

<https://www.rc.futaba.co.jp/>

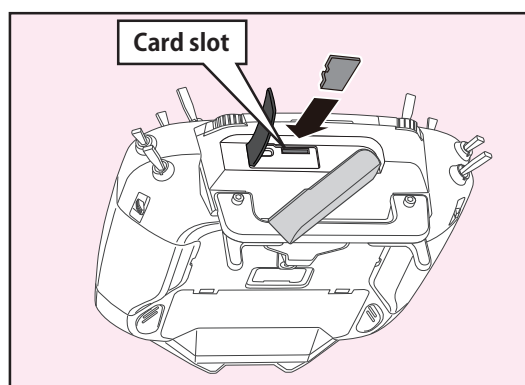
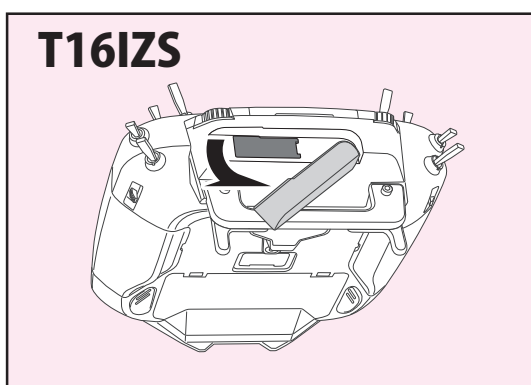
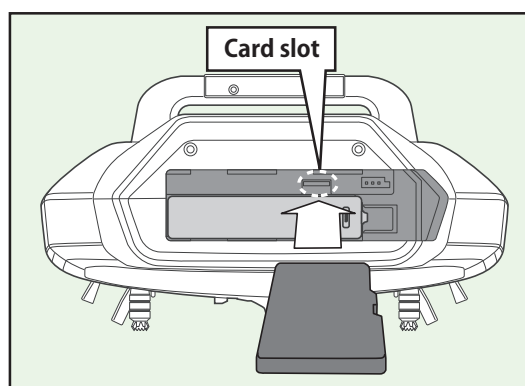
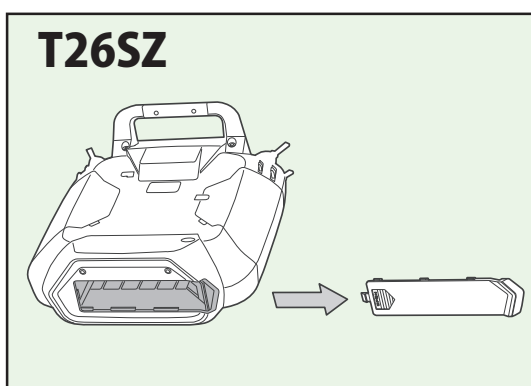
<https://futabausa.com>

2. Extract the zip file on your computer.

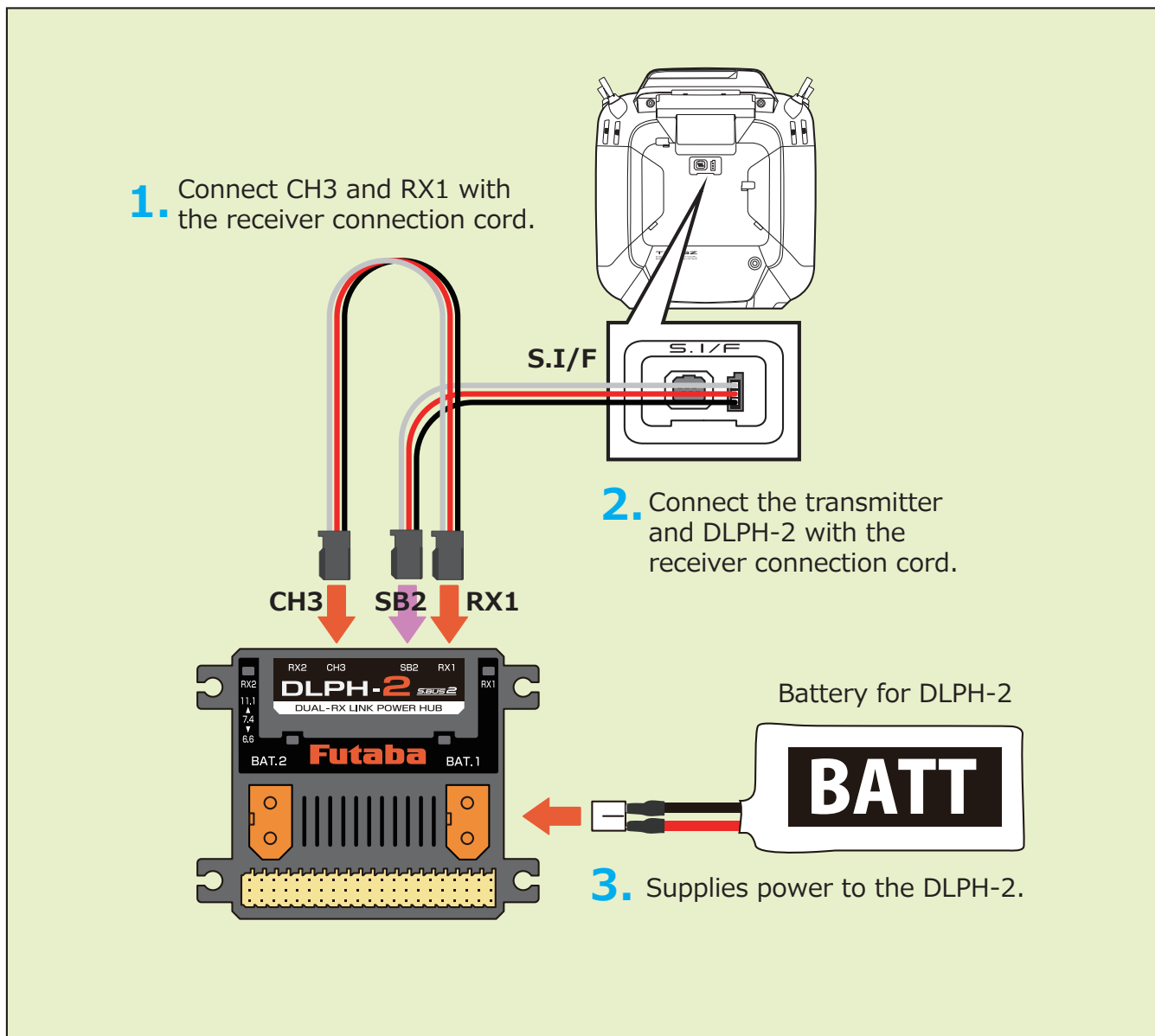


3. Copy the "FUTABA" folder into your microSD card.

4. Insert the microSD card with "FUTABA" folder that contained the update software into the SD card slot on your transmitter.



5. Connect the DLPH-2 to be updated to the S.I/F connector of the transmitter.

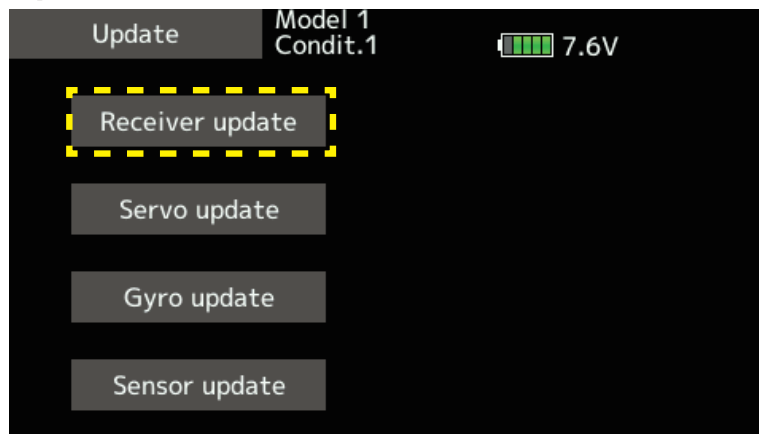


6. Turn on the transmitter and call "System Menu" ⇒ "Update".

System menu	Model1 Condit.1	7.3V	1/1
Display	Sound volume	System timer	
H/W setting	Battery	Range check	
S.Bus servo	Update	Information	

*The display screen will vary depending on the transmitter.

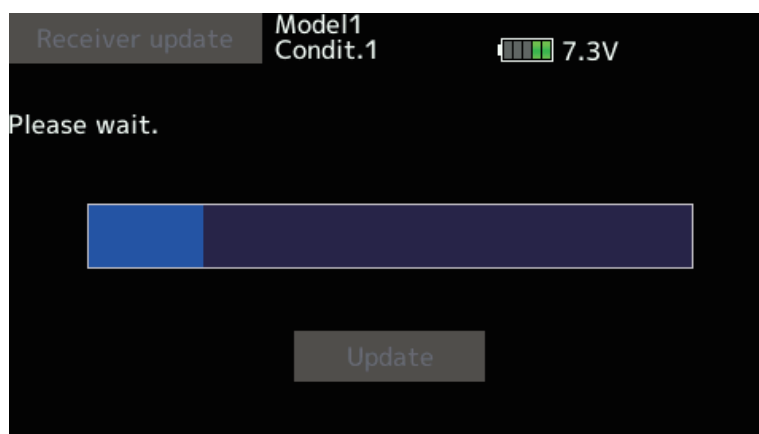
7. Tap [Receiver Update] → [DLPH-2].



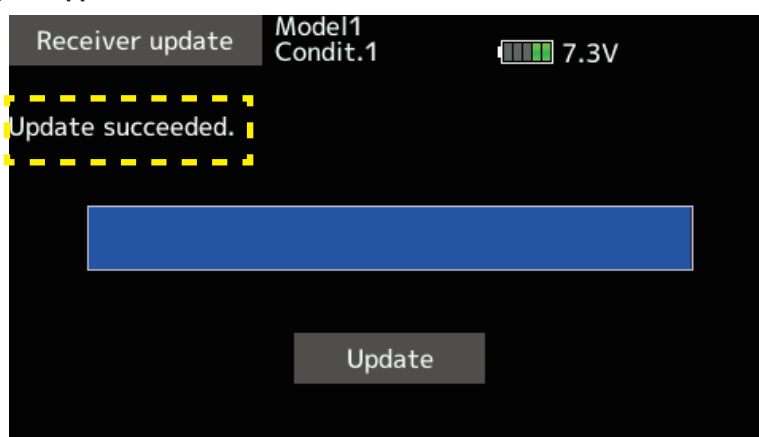
8. Tap [Update].



9. Update start.



10. When finished, the following will appear.



11. Check the version by tapping [System Menu] → [DLPH-2] → [Load].

12. Disconnect the DLPH-2 from the transmitter's S.I/F connector.

V1.1 UPDATE

- Improved receiver switching operation.