

# SPECIAL 101

## 1/43 B/O SLOT CAR RACING SET

### INSTRUCTION MANUAL



- **Model No: 2101**
- **Layout Size: 112 X 55CM**
- **Track Length: 268CM**
- **Power: 6V = 6W 4 X C/LR14 Alkaline Batteries(Not Included)**

#### **WARNING:**

1. Track have functional sharp edges.
2. Not suitable for children under 3 years old because small parts can be swallowed.
3. The paper, rubber band and polybag are packaging material purpose, which are not part of the toy and should be discarded properly for children's safety concern.
4. This toy contains magnets or magnetic components. Magnets which attract another magnet or metallic substance inside the human body could cause serious or even fatal injuries. Seek the advice of a doctor immediately if a magnet is swallowed or inhaled.
5. Remove the batteries from the battery box when not in use.
6. Keep the track away from delicate objects to avoid damaging them.
7. It is not recommended to set the track up on carpet floors.
8. Don't lock or hold the cars while the engine is on. This may lead to overheating and engine breakdown.
9. Keep all liquids, metal objects, extremely hot or cold source away from the track!
10. Use soft and dry cloth clean the track only. Before cleaning, please cut off the power.
11. Keep clean the braids.
12. The toy is not to be connected to more than the recommended number of power supplies.

**Please read the manual carefully before assembly and operation!**

**WARNING:**  
**CHOKING HAZARD---**  
Small Parts Not For  
Children Under 3 Years

# CONTENTS OF KIT:



**KING (orange colour)**



**ACE (red colour)**



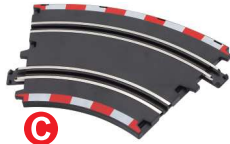
**Digital Proportional Speed Controller X2**



**Battery Box x1**



**Lap Counter & Powerbase Combo Track x1**



**Curve Track x12**



**Straight Track x3**



**Sticker x3**



**Bridge Stand x4**



**Bridge Pillar x2**



**Bridge Track Support x4**



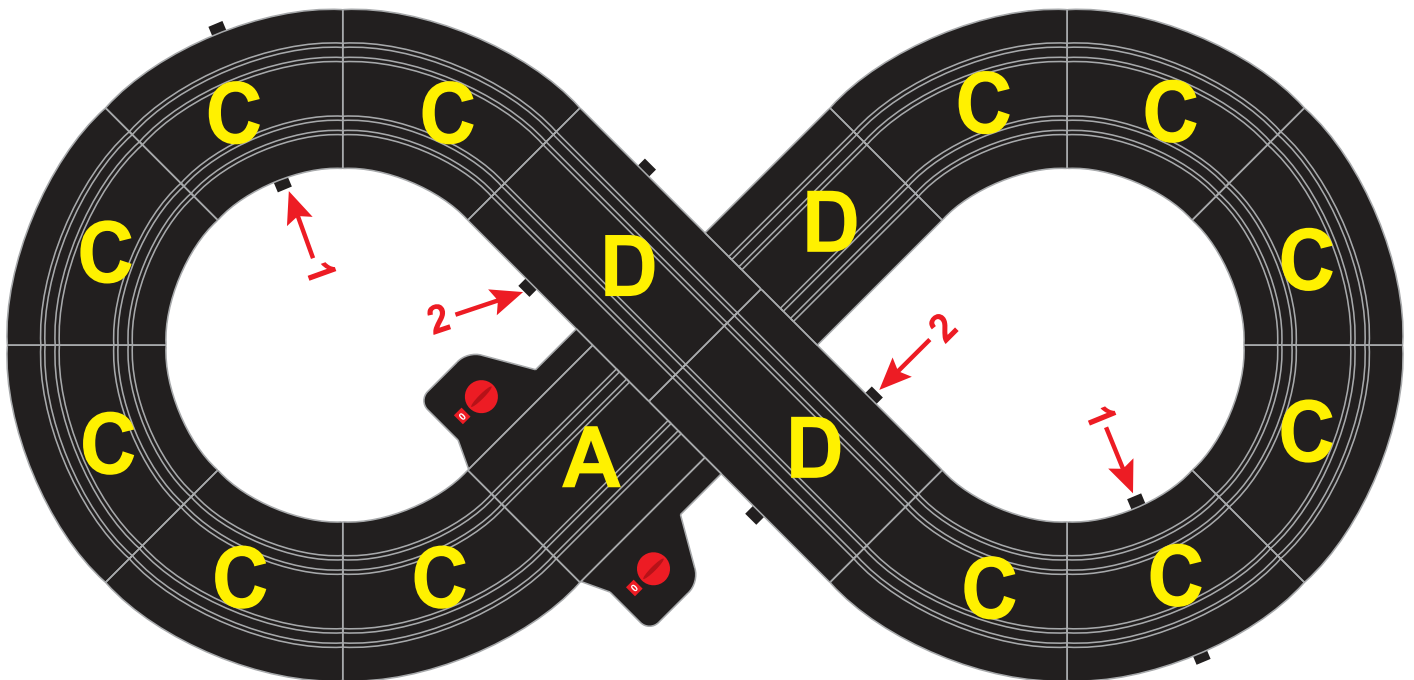
**Bridge Barrier X2**



**Guardrail x12**

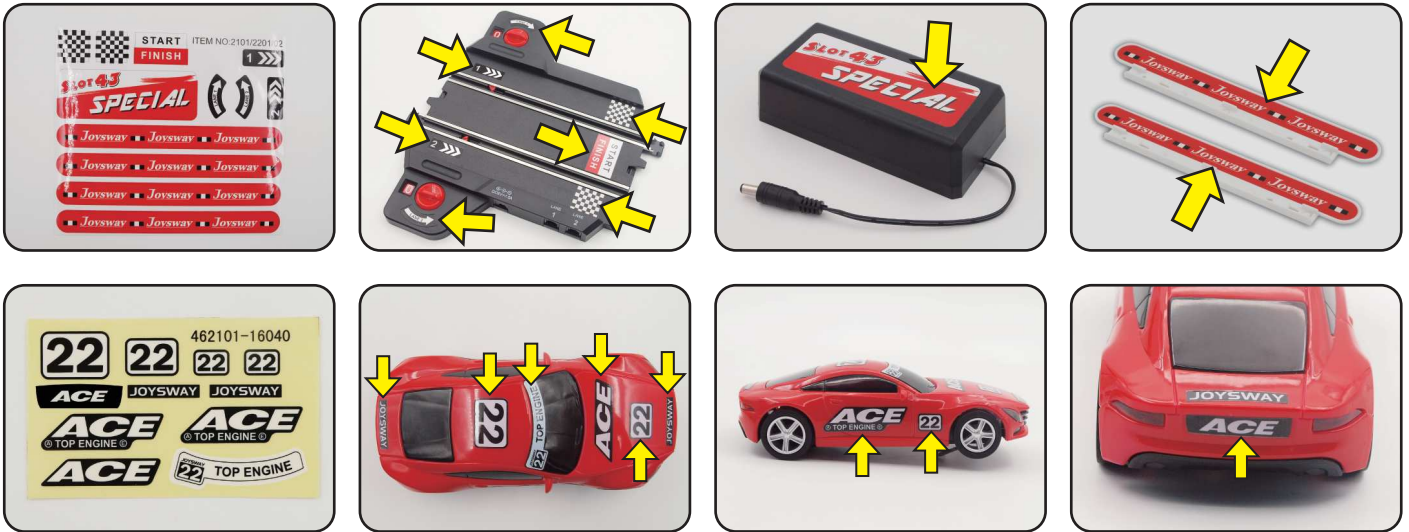
**Remark:** Reference letters shown above are marked on the underside of the track.

# LAYOUT DIAGRAM:

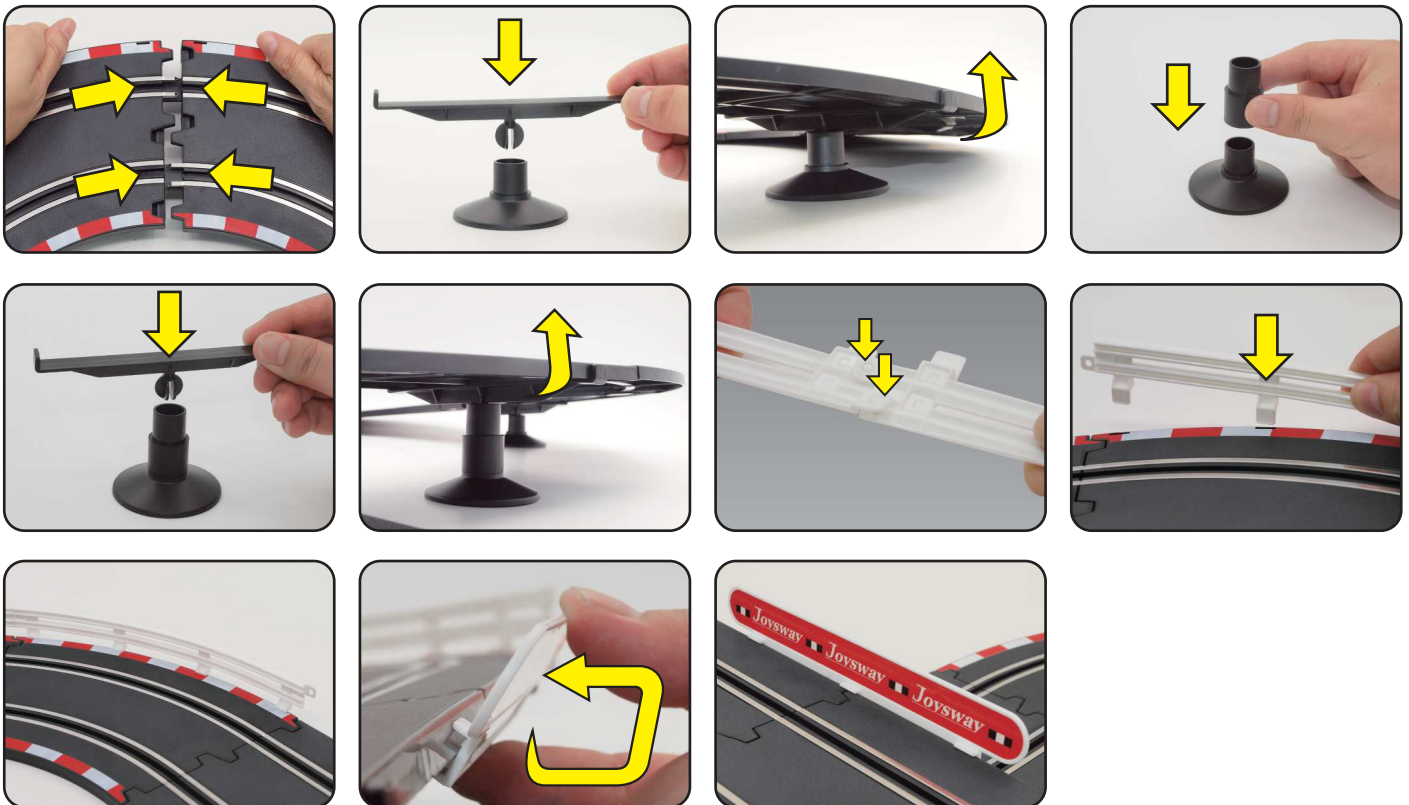


# ASSEMBLY INSTRUCTIONS:

1. Stick the decal on properly position as below pictures.



2. Assemble the layout as below pictures, Reference letters shown on layout diagram are marked on the underside of the track. During the tracks assembly, please note to fit the metal and plastic connector well so that you can assemble easily and avoid damaging the tracks.



3. Plug in the controller and battery box connector into socket. Lap Counter Lane 1 is related to metal track Lane 1 car, Lane 2 is related to metal track Lane 2 car.
4. Adjust the pick-up braids constantly by clean and dry cloth, make sure the pick-up braids and the bottom of car is about 30° as below picture shown.
5. Place the car on track, place the guide pin into track slot and the pick-up braids touch two metal lane on track separately, be caution not to cause short-circuit. Meanwhile, position the head of car before Finish line on lap counter, the car will be running as picture arrow shown direction.

