

LATRAX™



2016

PARTS CATALOG **1st Edition**

POWERED BY

TRAXXAS

Patents Pending

LATRAX PARTS CATALOG

AIR

Blue Tab

Alias Quad Rotor Helicopter (#6608)

- Features
- Accessories
- Exploded View
- Parts List



4WD ELECTRIC MODELS

Green Tabs

Rally, SST, and Teton

- Model Features and Information
- Model Accessories

4WD RALLY 1/18 RALLY CAR

Green Tab

Rally (#75054-1)

- Features
- Exploded Views
- Parts List



4WD SST 1/18 STADIUM TRUCK

Green Tab

SST (#76044-1)

- Features
- Exploded Views
- Parts List



4WD TETON 1/18 MONSTER TRUCK

Green Tab

Teton (#76054-1)

- Features
- Exploded Views
- Parts List



CONTACT INFORMATION

Traxxas Phone and Fax Numbers

Toll free: 1-888-TRAXXAS (872-9927)

Phone: 972-549-3000

Fax: 972-549-3011

Traxxas.com

Hours of Operation: 8:30am - 9:00pm Central Time

Shipping and Mailing Address

Traxxas

6250 Traxxas Way

McKinney, TX 75070

INFORMATION

- Batteries and battery chargers may or may not be included depending upon the model. Tools and other accessories may need to be purchased.
- Some models in this catalog may be photographed with optional equipment.
- The term "Radio" consists of a transmitter, receiver, and two or three servos (or one or two servos and an electronic speed control).
- Traxxas is continually updating and improving our products. Specifications and pricing in this catalog are subject to change without notice.
- Every attempt has been made to ensure the accuracy of the information presented in this catalog; however, Traxxas cannot be held responsible for typographical or other errors.
- Traxxas models are not intended for use on actual public streets, avenues or roadways.
- Some models may not be appropriate for children. Contact Traxxas if you have questions regarding age and application.

ALIAS

Quad Rotor Helicopter



MODEL 6608

FEATURES



Ergonomic 2.4GHz Transmitter



3 Flight Modes for All Skill Levels



3.7-Volt LiPo battery and USB charger



High Power Motors and Durable Frame

Quad-Rotor Flight Re-Imagined!

Alias is a clean-sheet design that focuses on the performance and design elements that make flying, and even learning to fly, fun. The first mission objective was durability. Alias is built around a unique molded-composite frame that is combined with clever high-tech construction to make it extremely light and virtually indestructible. Flying fun goes on and on without worrying about breakage from crash damage. The next mission was performance. Fun always comes from having more power so Alias' motors have 50% more power than standard motors, and when combined with the lightweight design and high-tech materials, Alias is lightning quick and ultra-responsive. A completely new flight control system was developed that provides unmatched 6-axis stability that works in the background without impacting performance and speed. It acts like a virtual spring that snaps Alias back to level controlled flight. New pilots can fly faster and perform aerobatic maneuvers sooner than they ever thought possible with Alias' unique flight control system.

Quad Rotor Helicopter

ALIAS

**MORE DURABLE
MORE SPEED
MORE FUN**



Rally Red



Brilliant Blue



Victory Green



Speed Orange



- High-Tech Molded Frame is Virtually Indestructible
- Molded Two-Piece Colored Canopy
- Three Flight Modes
- High-Output Motors
- Auto-Leveling
- 6-Axis Flight System

Features

- Fast and fun!
- Quad-rotor thrust with auto-leveling 6-axis flight system
- Multiple flight modes for first-time fliers to expert pilots
- Quickly master stable hovering and flight in Easy mode
- Perform one-button flips, rolls, and twists in Fast mode
- Colorful high-intensity LED optics light the way for maximum visibility
- Four high-output motors - 50% more power than standard motors
- 650mAh LiPo battery delivers up to 15 minutes of flight time
- High-Output USB charger fast charges the battery in about half an hour
- Sleek and innovative design
- 2.4GHz Transmitter eliminates frequency conflicts
- Full line of genuine LaTrax accessories available
- LaTrax is Powered by Traxxas for unmatched customer support
- Three customizable flight modes : Easy, Fast, Expert
- Reliable 2.4GHz control
- Low battery indicators for transmitter and helicopter
- Electronic trim controls / Digital trim indicators
- Programmable action buttons
- LCD transmitter display

What's in the box

- Alias Quad Rotor Helicopter
- Fully assembled
- Ready-To-Run
- 2.4Ghz radio system
- 650mAh LiPo battery
- USB-powered battery charger
- 1.5mm hex wrench (to assist with repairs)
- 4 Traxxas AAA alkaline batteries
- Spare rotor blade set
- Spare hardware
- Control sticks

POWERED BY



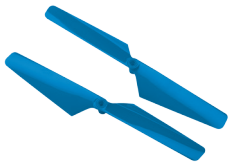
CANOPIES



- Replacement canopy for Alias
- Change to a different color or replace a damaged canopy
- Available in Red, Blue, Orange, Green, and White colors
- Includes new hardware

6611	Canopy, Alias, red/ 1.6x5mm BCS (self-tapping) (3)	\$5.00
6612	Canopy, Alias, blue/ 1.6x5mm BCS (self-tapping) (3)	\$5.00
6613	Canopy, Alias, orange/ 1.6x5mm BCS (self-tapping) (3)	\$5.00
6614	Canopy, Alias, green/ 1.6x5mm BCS (self-tapping) (3)	\$5.00
6615	Canopy, Alias, white/ 1.6x5mm BCS (self-tapping) (3)	\$5.00

ROTOR BLADE SETS



- Replacement rotor blades
- Change to a different color or replace damaged rotors
- Available in Black, Blue, Green, Orange, Red, and White colors
- Includes new hardware

6626	Rotor blade set, black (2)/ 1.6x5mm BCS (2)	\$2.00
6627	Rotor blade set, white (2)/ 1.6x5mm BCS (2)	\$2.00
6628	Rotor blade set, red (2)/ 1.6x5mm BCS (2)	\$2.00
6629	Rotor blade set, blue (2)/ 1.6x5mm BCS (2)	\$2.00
6630	Rotor blade set, orange (2)/ 1.6x5mm BCS (2)	\$2.00
6631	Rotor blade set, green (2)/ 1.6x5mm BCS (2)	\$2.00

LED LENSES



- Replacement LED lens set
- Change to a different color or replace damaged lenses
- Available in Blue, Clear, Green, Orange, and Red

6650	LED lens, clear (4)	\$3.00
6651	LED lens, red (4)	\$3.00
6652	LED lens, blue (4)	\$3.00
6653	LED lens, orange (4)	\$3.00
6654	LED lens, green (4)	\$3.00

LED LIGHT BAR



- LED Light bar adds 7 clear LEDs to the front of Alias
- Add visibility for night time flying
- Includes hardware and harness

6655	LED Lightbar/harness (7 clear lights)/ 1.6x5mm BCS (self-tapping) (2)	\$25.00
-------------	---	---------

CAMERA AND WIDE ANGLE LENS



- Add crisp, high quality aerial photography and video capability to Alias with 720P camera
- Writes files to Micro SD card (sold separately)
- Optional 120 degree wide angle lens

6660	Camera, Alias, 720P HD, 12MP, standard lens/ 1.6x5mm BCS (self-tapping) (2). MicroSD memory card required (not included)	\$62.50
6661	Lens, wide angle, 120 degree, Alias (for 6660 camera)	\$31.00

MAIN FRAME



- Customize Alias with alternate color main frame
- Available in Black Chrome and White
- Lower frame also available
- Hardware included

6623X	Main frame (black chrome)/ 1.6x5mm BCS (self-tapping) (4)	\$15.00
6623A	Main frame (white)/ 1.6x5mm BCS (self-tapping) (4)	\$10.00
6624A	Main frame, lower (white)/ 1.6x5mm BCS (self-tapping) (4)	\$4.00

MAIN SHAFT



- Optional 7075-T6 aluminum main shafts
- Blue anodized finish
- Hardware included

6633X	Main shaft, 7075-T6 aluminum, blue-anodized (4)/ 1.6x5mm BCS (4)	\$12.00
--------------	--	---------

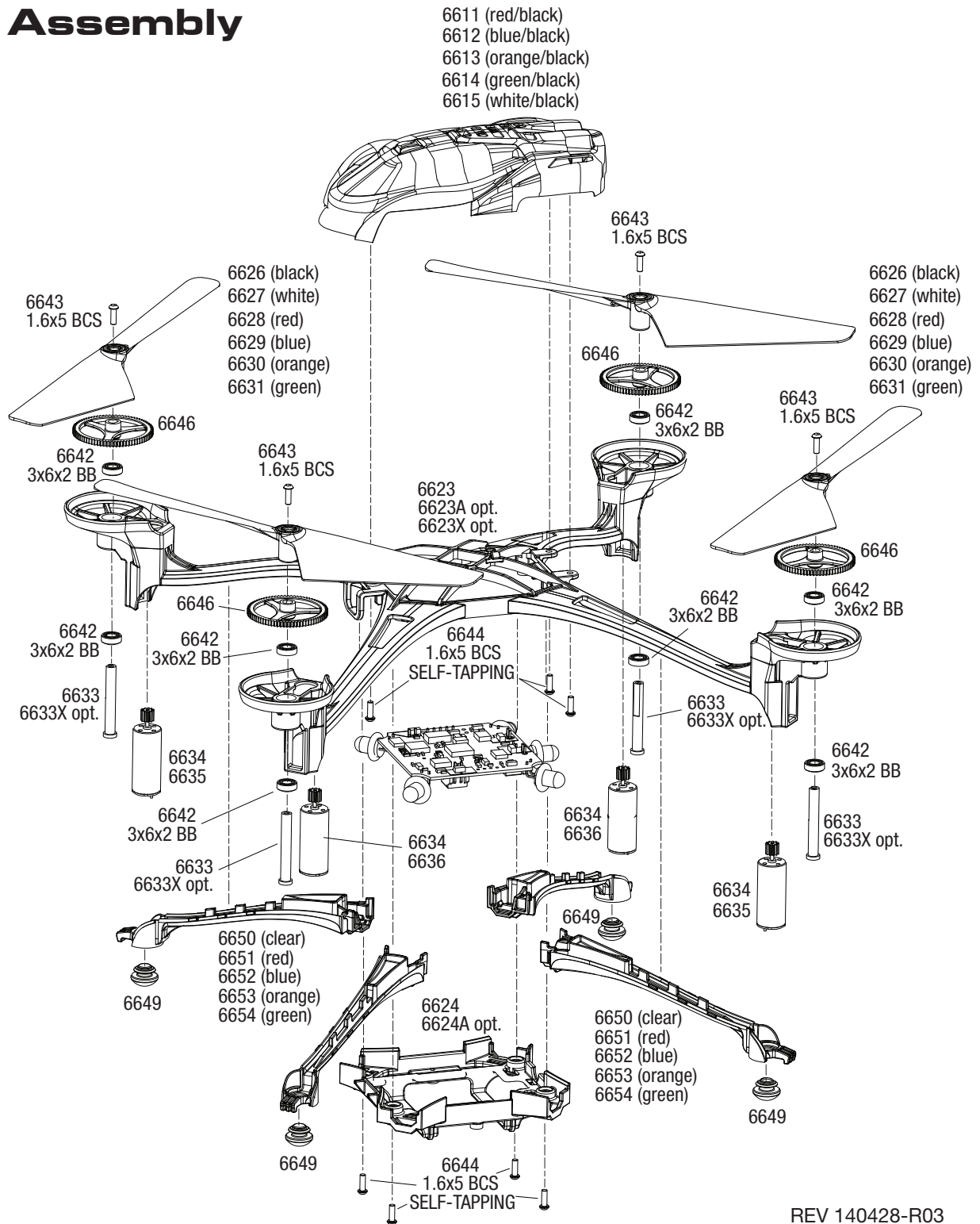
BATTERIES & CHARGERS



- Keep the fun going with additional LaTrax battery packs
- High output, dual-port USB fast charger charges two LaTrax batteries simultaneously

6637	Battery, LaTrax, 650mAh, LiPo	\$12.00
6638	Charger, USB, dual-port (high output)	\$12.00

Assembly



REV 140428-R03



PARTS SHOWN IN BOLD ARE OPTIONAL ACCESSORIES.
 Part categories and individual part listings are arranged alphabetically.
 Prices are shown in US Dollars.

Canopies & Blades		
6612	Canopy, Alias, blue/ 1.6x5mm BCS (self-tapping) (3).....	\$5.00
6614	Canopy, Alias, green/ 1.6x5mm BCS (self-tapping) (3)	\$5.00
6613	Canopy, Alias, orange/ 1.6x5mm BCS (self-tapping) (3)	\$5.00
6611	Canopy, Alias, red/ 1.6x5mm BCS (self-tapping) (3).....	\$5.00
6615	Canopy, Alias, white/ 1.6x5mm BCS (self-tapping) (3)	\$5.00
6626	Rotor blade set, black (2)/ 1.6x5mm BCS (2).....	\$2.00
6629	Rotor blade set, blue (2)/ 1.6x5mm BCS (2).....	\$2.00
6631	Rotor blade set, green (2)/ 1.6x5mm BCS (2)	\$2.00
6630	Rotor blade set, orange (2)/ 1.6x5mm BCS (2)	\$2.00
6628	Rotor blade set, red (2)/ 1.6x5mm BCS (2)	\$2.00
6627	Rotor blade set, white (2)/ 1.6x5mm BCS (2).....	\$2.00

Hardware		
6642	Bearings, 3x6x2mm (8)	\$11.00
6649	Feet, non-skid (4)	\$1.50
6643	Screws, 1.6x5mm button-head machine (hex drive) (6)	\$1.50
6644	Screws, 1.6x5mm button-head, self-tapping (hex drive) (6).....	\$1.50

LED Lenses		
6649	Feet, non-skid (4)	\$1.50
6652	LED lens, blue (4)	\$3.00
6650	LED lens, clear (4)	\$3.00
6654	LED lens, green (4).....	\$3.00
6653	LED lens, orange (4).....	\$3.00
6651	LED lens, red (4).....	\$3.00
6656	Lens, LED lightbar/ LED housing	\$5.00

Main Frame & LED Light Pipes		
6660	Camera, Alias, 720P HD, 12MP, standard lens/ 1.6x5mm BCS (self-tapping) (2). MicroSD memory card required (not included).....	\$62.50
6655	LED Lightbar, Alias /harness (7 clear lights)/ 1.6x5mm BCS (self-tapping) (2).....	\$25.00
6661	Lens, wide angle, 120 degree, Alias (for 6660 camera)	\$31.00
6623X	Main frame (black chrome)/ 1.6x5mm BCS (self-tapping) (4)....	\$15.00
6623	Main frame (black)/ 1.6x5mm BCS (self-tapping) (4).....	\$10.00
6623A	Main frame (white)/ 1.6x5mm BCS (self-tapping) (4)	\$10.00
6624	Main frame, lower (black) / 1.6x5mm BCS (self-tapping) (4)	\$4.00
6624A	Main frame, lower (white) / 1.6x5mm BCS (self-tapping) (4)	\$4.00

Main Shaft & Gears		
6633	Main shaft (2)/ 1.6x5mm BCS (2)	\$3.00
6633X	Main shaft, 7075-T6 aluminum, blue-anodized (4)/ 1.6x5mm BCS (4).....	\$12.00
6646	Spur gear, 78-tooth (2).....	\$1.50

Motors & Electronics		
6637	Battery, LaTrax, 650mAh, LiPo.....	\$12.00
6638	Charger, USB, dual-port (high output).....	\$12.00
6636	Motor, clockwise (high output, red connector) (1).....	\$10.00
6634	Motor, clockwise (high output, red connector) (2)/ motor, counter-clockwise (high output, black connector) (2).....	\$40.00
6635	Motor, counter-clockwise (high output, black connector) (1).....	\$10.00
6639	Transmitter, 2.4GHz, 6-channel	\$60.00

Radio System, Batteries & Chargers		
6641	Battery door, transmitter.....	\$3.00
6637	Battery, LaTrax, 650mAh, LiPo.....	\$12.00
2911	Battery, Power Cell AAA Alkaline (4).....	\$3.99
6638	Charger, USB, dual-port (high output).....	\$12.00
6640	Gimbals, transmitter (levers (2), pads (2))	\$3.00
6639	Transmitter, 2.4GHz, 6-channel	\$60.00

Ready-to-Fly & EZ-Connect Models		
6608	Alias: Quad Rotor Helicopter	Call

If you have questions or need technical assistance, call Traxxas at:

1-888-TRAXXAS

(1-888-872-9927) (U.S. residents only)

For orders, calls outside the U.S., and other information, call 972-549-3000, or fax to 972-549-3011 e-mail Traxxas at support@Traxxas.com

TRAXXAS.COM

LaTRAX

4WD ELECTRIC MODELS



RALLY

MODEL 75054-1



SST

MODEL 76044-1



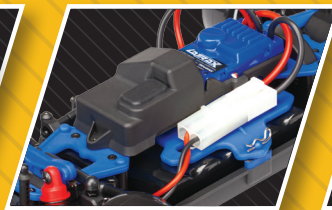
TETON

MODEL 76054-1

FEATURES



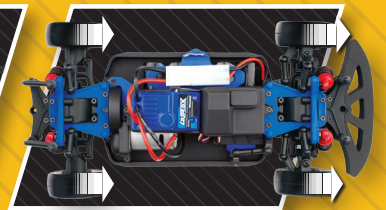
2.4GHz Radio System



Weatherproof Power System



Battery pack and charger included



4-Wheel Drive Traction

Affordable Fun. Anywhere. Anytime.

The LaTrax line of vehicles offers affordable fun in a convenient size that can be taken anywhere and driven anytime. Each vehicle features an AWD/4WD drivetrain for total traction and control, all-weather ready electronics for complete driving freedom, and a 2.4GHz Radio System that keeps you confidently in control.

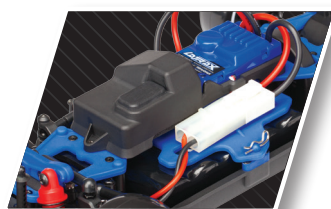
Each model is fully assembled and ready for fun, right out of the box.

4WD ELECTRIC MODELS

Model Features



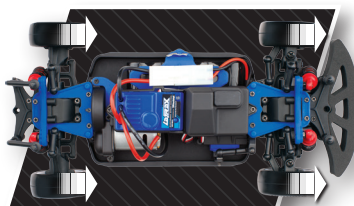
LaTrax Radio System
2.4GHz technology for long range and dependable performance, and you never have to worry about radio conflicts with your friends.



Waterproof Power System
4WD excitement year-round with waterproof electronic speed control, receiver box, and steering servo for no-worry fun in wet conditions.



Battery Pack and Charger
2-amp peak detecting charger and high-capacity Power Cell battery are included to help you get right to the fun.



4-Wheel Drive Traction
Simple and efficient shaft drive for on and off-road performance and aggressive traction in all conditions.

Model Information

Model Name	LaTrax Rally (75054-1)
Model Type	4WD Rally Car
Vehicle Specifications	
Scale Ratio	1/18
Weight	19.5 oz./554g
Length	10.4 in./265mm
Height	3.5 in./95mm
Front Track	4.17 in./106mm
Rear Track	4.23 in./107.5mm
Wheelbase	6.5 in./165.3mm
Wheel Information	
Wheel Type (f/r)	12-Spoke
Front Wheel Diameter	1.3 in./33mm
Rear Wheel Diameter	1.3 in./33mm
Tire Type (f/r)	Soft-Compound Slicks
Front Tire Diameter	1.7 in./43mm
Rear Tire Diameter	1.7 in./43mm
Chassis Information	
Front Shock Length	1.34 in./35mm
Rear Shock Length	1.34 in./35mm
Steering	Bellcrank
Chassis Structure	Monocoque
Chassis Material	Molded Composite Nylon
Components Information	
Speed Control	Waterproof Forward/Reverse ESC
Motor	370 Brushed
Drivetrain	4WD
Transmission	14T Pinion / 54T Spur
Differential Type	Gear
Overall Drive Ratio (stock)	2.5:1
Gear Pitch	0.5 Mod.
Radio System	LaTrax 2.4GHz Radio System
Battery Type (remote)	4 "AA"
Battery Compartment Information	
Length	4.01 in./102mm
Width	1.37 in./35mm
Height	0.70 in./18mm
Miscellaneous Information	
Other Included Items	• Tuning Tools

ON ROAD OR OFF
LATRAX MEANS
AFFORDABLE FUN



LaTrax SST (76044-1)

4WD Stadium Truck

1/18

26.06 oz /739g

12.16 in./309mm

4.61 in./117mm

6.73 in./171mm

6.73 in./171mm

6.44 in./163.5mm

5-Spoke

1.38, 1.85 in./35, 47mm (outer, inner)

1.38, 1.85 in./35, 47mm (outer, inner)

Slash

2.676 in./68mm

2.676 in./68mm

2.36 in./60mm

2.36 in./60mm

Bellcrank

Monocoque

Molded Composite Nylon

Waterproof Forward/Reverse ESC

370 Brushed

4WD

10T Pinion / 60T Spur

Gear

2.5:1

0.5 Mod.

LaTrax 2.4GHz Radio System

4 "AA"

4.01 in./102mm

1.37 in./35mm

0.70 in./18mm

• Tuning Tools

LaTrax Teton (76054-1)

4WD Monster Truck

1/18

19.5 oz /554g

10.16 in./258mm

4.65 in./118mm

4.17 in./106mm

4.23 in./107.5mm

6.44 in./165.3mm

5-Spoke

1.63 in./41.5mm

1.63 in./41.5mm

Teton

1.7 in./43mm

1.7 in./43mm

2.36 in./60mm

2.36 in./60mm

Bellcrank

Monocoque

Molded Composite Nylon

Waterproof Forward/Reverse ESC

370 Brushed

4WD

10T Pinion / 60T Spur

Hardened Steel Bevel (Ring and Pinion)

2.5:1

0.5 Mod.

LaTrax 2.4GHz Radio System

4 "AA"

4.01 in./102mm

1.37 in./35mm

0.70 in./18mm

• Tuning Tools



SLICK TIRES ON 12-SPOKE CHROME WHEELS 



- Assembled tire and wheel sets
- Four color choices are available
- Simple bolt-on installation
- Improve the appearance, ruggedness, and control

7573X	Tires & wheels, assembled, glued (12-spoke red chrome wheels, slick tires) (2)	\$12.00
7573R	Tires & wheels, assembled, glued (12-spoke blue chrome wheels, slick tires) (2)	\$12.00
7573A	Tires & wheels, assembled, glued (12-spoke black chrome wheels, slick tires) (2)	\$12.00
7573	Tires & wheels, assembled, glued (12-spoke chrome wheels, slick tires) (2)	\$12.00

SST OFF ROAD TIRES AND WHEELS 



- Assembled tire and wheel, and wheel-only sets
- Two color choices are available
- Simple bolt-on installation
- Improve the appearance, ruggedness, and control of SST

7073A	Tires and wheels, assembled, glued (SCT satin chrome wheels, red beadlock style, SCT off-road racing tires, foam inserts) (2)	\$19.00
7073	Tires and wheels, assembled, glued (SCT satin chrome wheels, SCT off-road racing tires, foam inserts) (2)	\$18.00
7072A	Wheels, SCT satin chrome, red beadlock style, dual profile (1.8" inner, 1.4" outer) (2)	\$7.00
7072	Wheels, SCT satin chrome, beadlock style, dual profile (1.8" inner, 1.4" outer) (2)	\$6.00
7071	Tires, off-road racing, SCT dual profile (1 each right & left)/ foam inserts (2)	\$10.00

TETON OFF ROAD TIRES AND WHEELS 



- Assembled and glued tire and wheel sets
- Separate tire sets to replace worn tires
- Separate wheel sets
- Simple bolt-on installation

7672	Tires & wheels, assembled, glued (Teton 5-spoke wheels, Teton tires) (2)	\$16.00
7671	Wheels, Teton (2)	\$6.00
7573A	Tires, Teton (2)	\$9.00

ALUMINUM WHEEL NUT WASHERS  



- Add a splash of color to the wheels of SST and Teton
- Includes 3x12mm CS hardware

7668	Wheel nut washer, machined aluminum, blue / 3x12mm CS (4)	\$15.00
7668G	Wheel nut washer, machined aluminum, green / 3x12mm CS (4)	\$15.00
7668R	Wheel nut washer, machined aluminum, red / 3x12mm CS (4)	\$15.00
7668X	Wheel nut washer, machined aluminum, orange / 3x12mm CS (4)	\$15.00

ALUMINUM FRONT & REAR DRIVESHAFTS   



- Improve appearance, ruggedness, and control
- Machined billet 6061-T6 aluminum
- Simple bolt-on installation

7550R	Driveshaft assembly, front/rear, Rally (blue-anodized) (2)	\$15.00
7650R	Driveshaft assembly, front/rear, SST, Teton (blue-anodized) (2)	\$20.00

BLUE-ANODIZED ALUMINUM SHOCK TOWERS 



- Improve appearance, ruggedness, and control
- Machined billet 6061-T6 aluminum
- Simple bolt-on installation

7537X	Shock towers, front & rear, 6061-T6 aluminum (blue-anodized)	\$25.00
--------------	--	---------

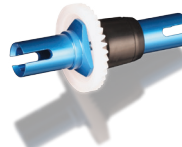
BLUE-ANODIZED CENTER DRIVESHAFT  



- Blue-anodized
- Aluminum center
- One-way bearing
- Easy installation

7555X	Driveshaft, center, Rally, Teton (one-way)	\$28.00
--------------	--	---------

BLUE-ANODIZED ALUMINUM DIFFERENTIAL SPOOL 



- Improve the appearance, ruggedness, and control
- Machined billet 6061-T6 aluminum
- Simple bolt-on installation

7581	Spool (solid axle), 6061-T6 aluminum (blue-anodized)	\$15.00
-------------	--	---------

BLUE-ANODIZED ALUMINUM SHOCKS 



- Improve the looks and handling of Rally
- Blue anodized shock bodies with white springs
- Includes hardware and shock oil

7560X	Shocks, aluminum (blue-anodized) (assembled with springs) (4)	\$55.00
--------------	---	---------

OIL FILLED SHOCKS 



- Improve the handling of Rally with upgraded oil-filled shocks
- Composite body
- Includes hardware and shock oil

7561	Shocks, oil-filled (assembled with springs) (4)	\$28.00
-------------	---	---------

GTR ANODIZED ALUMINUM SHOCKS



- Improve the handling of SST and Teton with rugged aluminum body shocks
- Hard anodized PTFE aluminum with TiN shafts for long life

7665 Shocks, GTR hard-anodized, PTFE-coated aluminum with TiN shafts (fully assembled w/ springs) (4)\$65.00

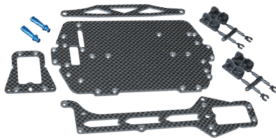
OIL FILLED SHOCK REBUILD KIT



- Get like new performance by rebuilding oil filled shocks
- Kit includes new o-ring, bladder, piston, shaft guide, E-clips, shock caps, and shock rod ends
- Renews 2 shocks

7662 Rebuild kit, oil-filled shocks (o-ring, bladder, piston, shaft guide, E-clips, shock cap, shock rod end) renews 2 shocks\$5.00

CARBON FIBER CHASSIS



- Save weight and get the aggressive look of carbon fiber
- Includes chassis, upper chassis, battery hold down
- Adhesive foam tape and hardware included

7525 Carbon fiber conversion kit (includes chassis, upper chassis, battery hold down, adhesive foam tape, hardware)\$100.00

BEARINGS



- Replace original bushings or bearings for increased performance
- Smoother operation and longer life
- Includes bearings for hub carriers, diff assy, and driveshaft

7541X Bearings: 4x8mm (2), 6x10mm (8), 8x12mm (5)\$16.00

BATTERIES AND CHARGERS



- Keep the fun going with additional LaTrax battery packs
- Series 1 Power Cell, 1200mAh (Molex)
- NiMH, 6-C flat, 7.2V, 2/3A
- 2 amp DC charger for 5-6 cell, 6.0 to 7.2 volt NiMH

2925A Battery, Series 1 Power Cell, 1200mAh (Molex)\$24.50
 2977 Charger, DC, 2 amp (Molex) (5 - 6 cell, 6.0 - 7.2 volt, NiMH).....\$26.00

POWER SUPPLY ADAPTER



- Designed for Traxxas peak detecting DC fast chargers
- Plug charger into a standard AC outlet for fast charging at home or at the track

2976 Traxxas AC to DC Power Supply Adapter\$32.00



RALLY

1/18 Scale 4WD Rally Car



MODEL 75054-1

FEATURES



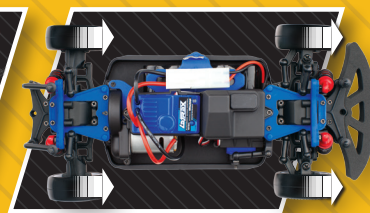
2.4GHz Radio System



Fully Independent Suspension



6-Volt battery pack and charger



4-Wheel Drive Traction

Built To Last, All-Weather Fun!

The LaTrax 1/18 Rally incorporates the precision and performance of hobby-class radio control into a compact and incredibly affordable model that is easy to take along anywhere and is ready for fun in an instant. The LaTrax Rally is fully assembled and Ready-to-Run, with everything you need included in the package. The powerful motor, all-wheel drive, and fully independent suspension immediately transform the ground beneath your feet into a race track. Offices, malls, sidewalks, and playgrounds are the site for your next racing challenge. Long run times and the dependable 2.4GHz radio system extend your playtime. LaTrax products are built to last, protected by world-class Traxxas support, 100% parts availability, and the Traxxas Lifetime Electronics Warranty.

1/18 Scale 4WD Rally Car

RALLY

AVAILABLE IN
FOUR COLORS



Red



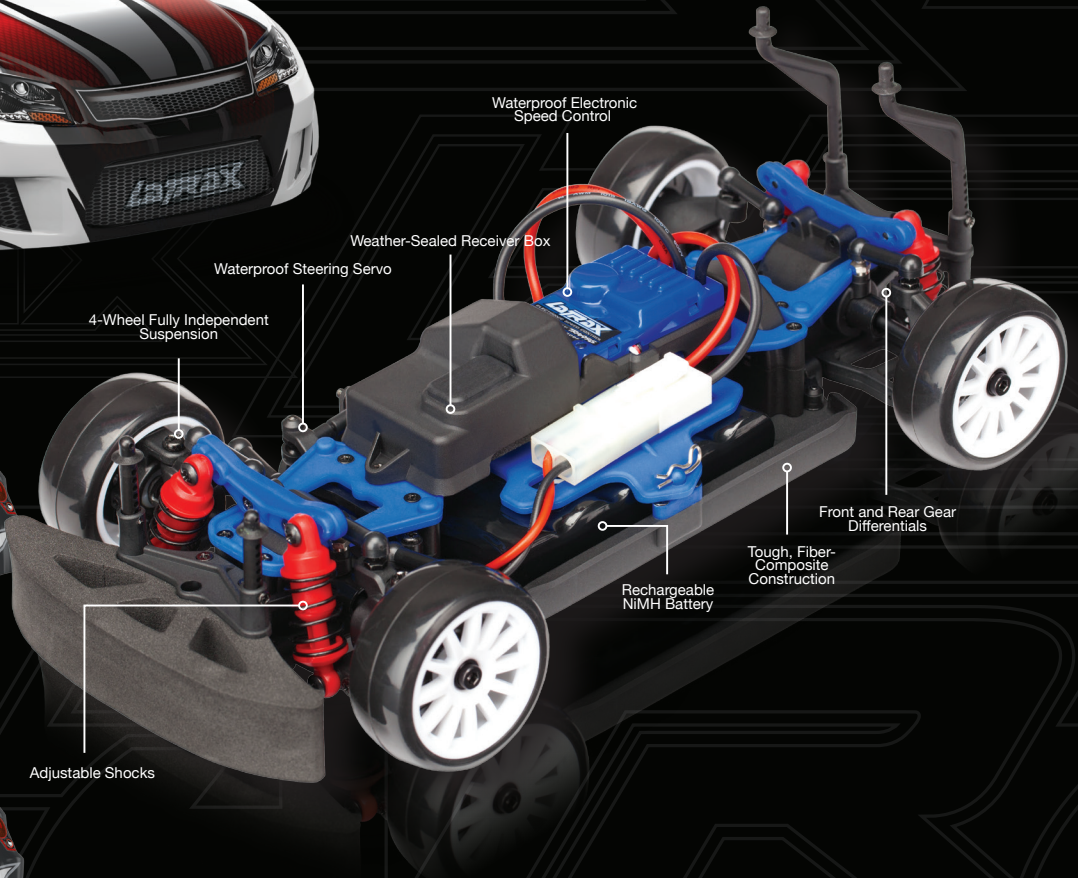
Blue



Green



Orange



Features

- Tough, rally-inspired body design with cutting edge graphics
- Pre-glued, low-profile slick tires mounted on white, 12-spoke rally wheels
- Impact-absorbing foam front bumper
- Adjustable-height body mounts
- Fully-proportional forward, reverse, and braking control
- Full-time 4WD
- High-torque waterproof sub-micro steering servo
- Front and rear gear differentials
- Front C-hub design with universal driveshafts
- Rear axle carrier with universal driveshafts
- Coil-over shocks with variable mounting positions
- 4-wheel fully independent suspension
- Fiber-composite chassis
- Quick-release battery hold-down for fast battery pack changes
- Servo reversing
- Electronic steering trim controls
- Internal antenna
- Award-winning Traxxas support and parts availability
- Lifetime Electronics Warranty

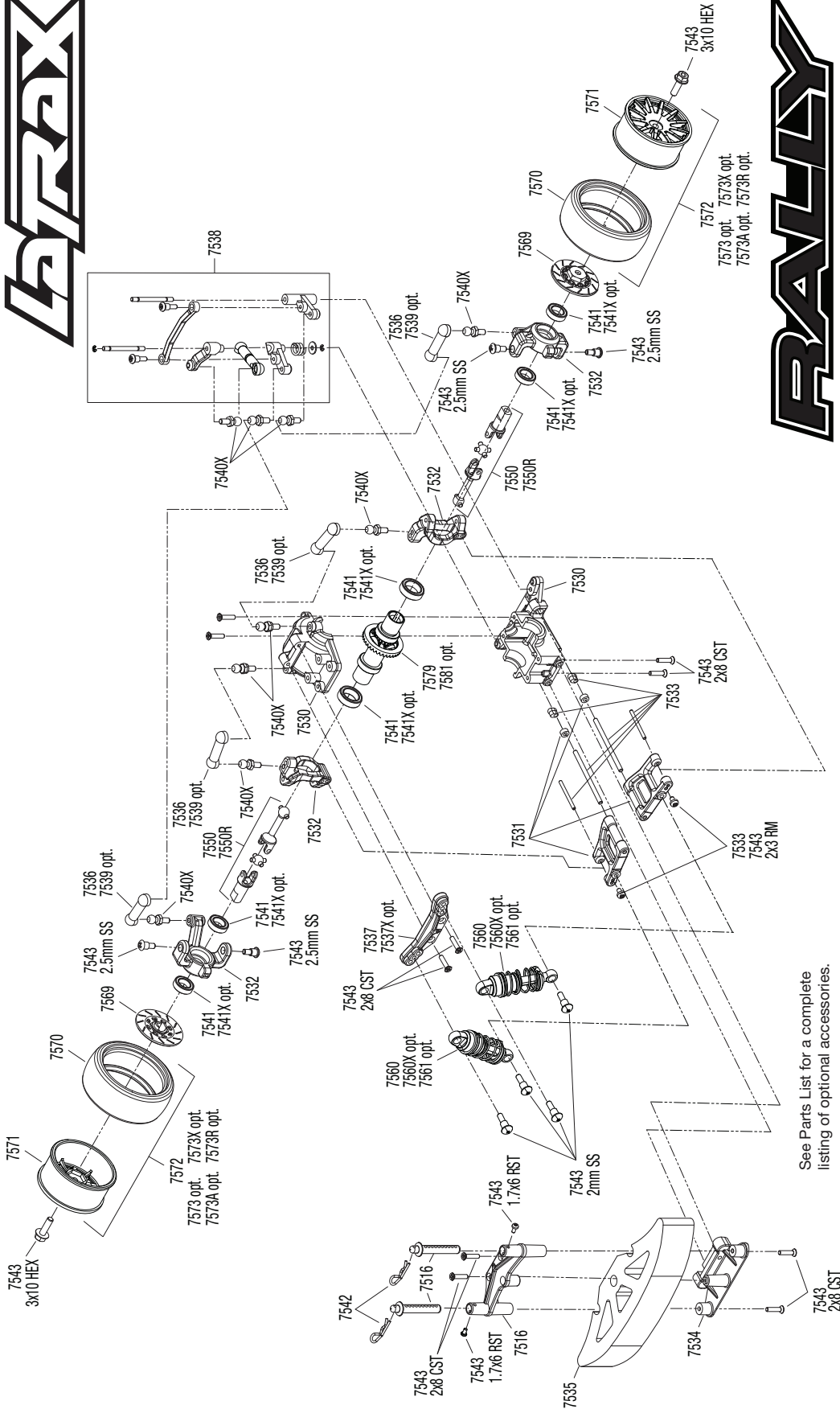
What's in the box

- 1/18 LaTrax Rally
- Fully assembled
- Ready-To-Run
- 2.4Ghz radio system
- 370 motor (Brushed)
- Waterproof, all-weather electronics
- 6.0V 5-cell NiMH battery
- Battery charger
- 4 "AA" batteries (transmitter)
- Painted body

POWERED BY



TRAXXAS



TRAXXAS

Front Assembly Model 75054-1

REV 150730-R02

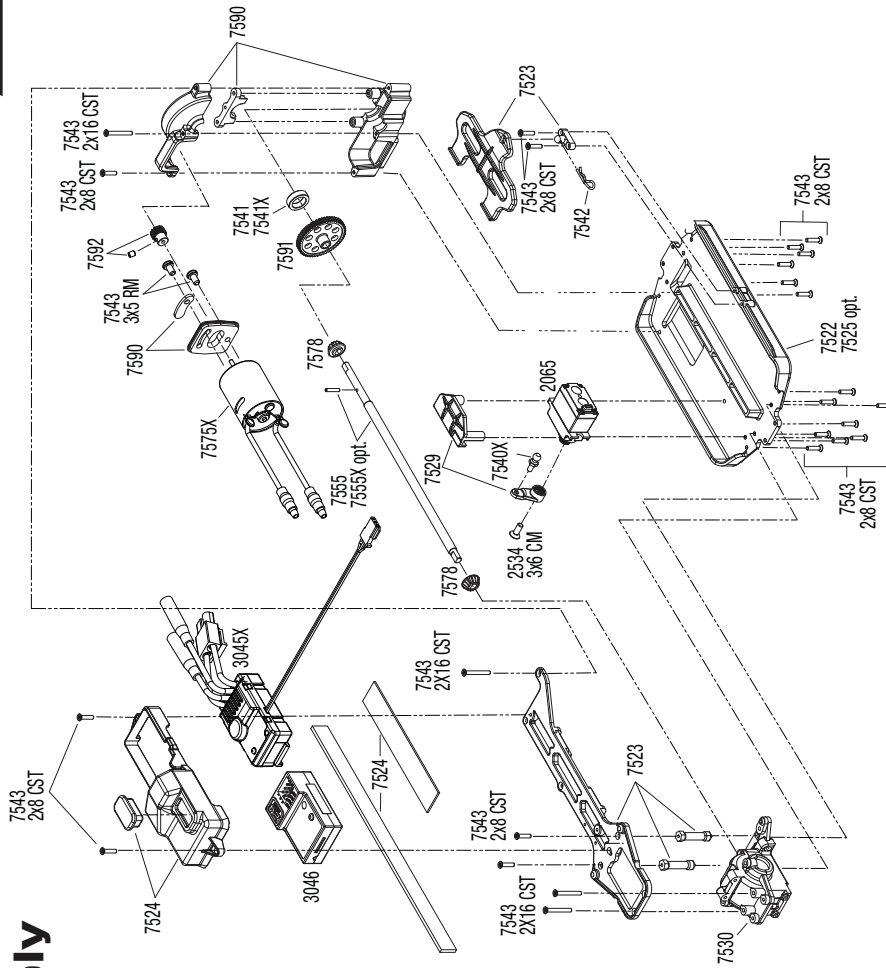
See Parts List for a complete listing of optional accessories.

Specifications on this page are subject to change without notice. Every attempt has been made to ensure the accuracy of this drawing; however, La Trax cannot be held responsible for typographical or other errors. See Parts List for a complete listing of optional accessories.

LaTRAX

RALLY

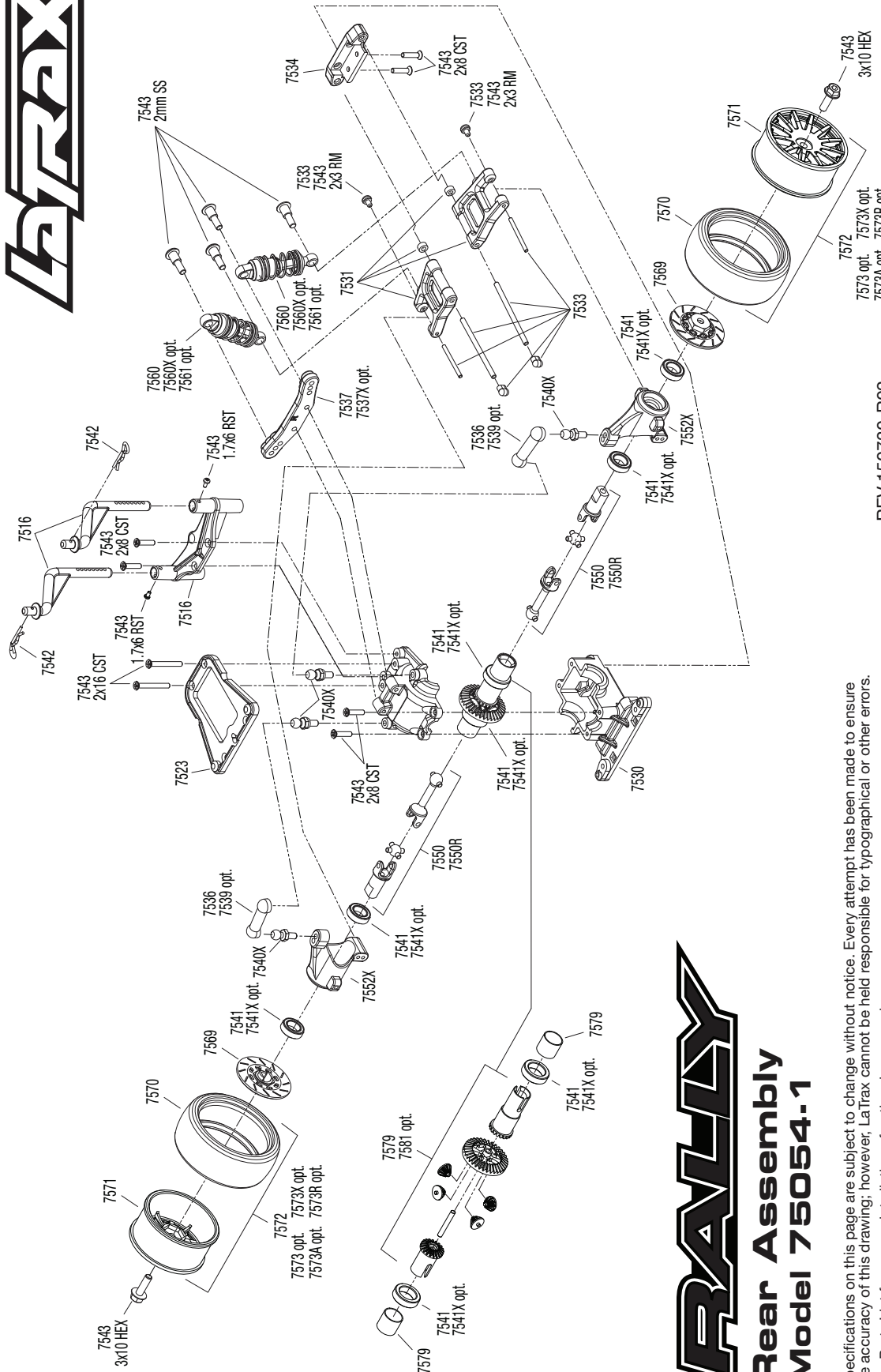
Chassis Assembly Model 75054-1



REV 150730-R02

Specifications on this page are subject to change without notice. Every attempt has been made to ensure the accuracy of this drawing; however, LaTrax cannot be held responsible for typographical or other errors.

See Parts List for a complete listing of optional accessories.



REV 150730-R02

RALLY

Rear Assembly Model 75054-1

Specifications on this page are subject to change without notice. Every attempt has been made to ensure the accuracy of this drawing; however, LaTrax cannot be held responsible for typographical or other errors. See Parts List for a complete listing of optional accessories.

RALLY

PARTS SHOWN IN BOLD ARE OPTIONAL ACCESSORIES.

Part categories and individual part listings are arranged alphabetically.

Prices are shown in US Dollars.

Bearings & Bushings

7541X	Bearings: 4x8mm (2), 6x10mm (8), 8x12mm (5)	\$16.00
7541	Bushings: 4x8x3mm (2), 6x10x3mm (8), 8x12x3.5mm (5)	\$3.00

Body & Accessories

7516	Body mounts, front & rear / body mount posts, front & rear	\$6.00
7511	Body, LaTrax 1/18 Rally (clear, requires painting)/ decals	\$12.00
7514	Body, LaTrax 1/18 Rally, blue (painted)/ decals	\$18.00
7513	Body, LaTrax 1/18 Rally, green (painted)/ decals	\$18.00
7517	Body, LaTrax 1/18 Rally, orange (painted)/ decals	\$18.00
7515	Body, LaTrax 1/18 Rally, red (painted)/ decals	\$18.00
7512	Body, LaTrax 1/18 Rally, yellow (painted)/ decals	\$18.00

Bumpers & Skidplates

7535	Body bumper, foam	\$2.00
7534	Suspension pin retainer, front & rear	\$5.00

Chassis & Attachments

7535	Body bumper, foam	\$2.00
7516	Body mounts, front & rear / body mount posts, front & rear	\$6.00
7524	Box, receiver/ ESC mount/ rubber plug/ adhesive foam tape (2) ...	\$3.00
7530	Bulkhead, front & rear / differential housing, front & rear	\$6.00
7525	Carbon fiber conversion kit (includes chassis, upper chassis, battery hold down, adhesive foam tape, hardware) ...	\$100.00
7522	Chassis	\$8.00
7529	Servo mount/ servo horn	\$3.00
7537	Shock towers, front & rear	\$3.00
7537X	Shock towers, front & rear, 6061-T6 aluminum (blue-anodized)	\$25.00
7523	Upper chassis/ battery hold down	\$5.00

Differential Components

7579	Gear set, differential (output gears (2)/ spider gears (4))/ring gear, 35T/ 2x14.8mm pin (1)/ sleeve (2)	\$5.00
7578	Pinion gear, differential (2)	\$2.50
7581	Spool (solid axle), 6061-T6 aluminum (blue-anodized)	\$15.00

Driveline Components

7536	Camber links (4)/ toe links (2)	\$2.75
7552X	Carriers, stub axle (2)	\$5.00
7532	Caster blocks (c-hubs) (2)/ steering block (2)	\$5.00
7550	Driveshaft assembly, front & rear (4)	\$8.00
7550R	Driveshaft assembly, front/rear, 6061-T6 aluminum (blue-anodized) (2)	\$15.00
7555X	Driveshaft, center (one-way)	\$28.00
7555	Driveshaft, center, aluminum / pin	\$4.00
7569	Wheel hubs, hex (disc brake rotors) (4)	\$3.50

Front Suspension

7530	Bulkhead, front & rear / differential housing, front & rear	\$6.00
7536	Camber links (4)/ toe links (2)	\$2.75
7539	Camber rods, 2-degree/3-degree (6 each)	\$4.00
7532	Caster blocks (c-hubs) (2)/ steering block (2)	\$5.00
7540X	Pivot balls: black (6), silver (2), black (long) (2)	\$6.50
7537	Shock towers, front & rear	\$3.00
7537X	Shock towers, front & rear, 6061-T6 aluminum (blue-anodized)	\$25.00
7531	Suspension arms, front & rear (4)	\$8.00
7534	Suspension pin retainer, front & rear	\$5.00
7533	Suspension pin set, complete (front & rear) / hardware	\$5.50

Hardware

7541X	Bearings: 4x8mm (2), 6x10mm (8), 8x12mm (5)	\$16.00
7542	Body clips (12)	\$2.00
7541	Bushings: 4x8x3mm (2), 6x10x3mm (8), 8x12x3.5mm (5)	\$3.00
7540X	Pivot balls: black (6), silver (2), black (long) (2)	\$6.50
7543X	Screw set, complete	\$4.00
7533	Suspension pin set, complete (front & rear) / hardware	\$5.50

Motors & Electronics

3045X	Electronic Speed Control, LaTrax, waterproof (assembled with bullet connectors)	\$60.00
2064	Gear set (for 2065 waterproof sub-micro servo)	\$4.00
7575X	Motor, 370 (28-turn) (assembled with bullet connectors)	\$10.00
3046	Receiver, LaTrax micro, 2.4GHz (3-channel)	\$25.00
2065	Servo, sub-micro, waterproof	\$32.00

Radio System, Batteries & Chargers

2976	AC to DC converter, 40W	\$32.00
2914	Battery, Power Cell AA Alkaline (4)	\$3.99
2925A	Battery, Series 1 Power Cell, 1200mAh (Molex) (NiMH, 6-C flat, 7.2V, 2/3A) (requires #2921 charger, or other Traxxas 6-cell NiMH battery charger with #3062 adapter)	\$24.50
7524	Box, receiver/ ESC mount/ rubber plug/ adhesive foam tape (2) ...	\$3.00
7521	Charger, A/C, 350 mAh (5-cell, NiMH)	\$15.00
2977	Charger, DC, 2 amp (Molex) (5 - 6 cell, 6.0 - 7.2 volt, NiMH)	\$26.00
2064	Gear set (for 2065 waterproof sub-micro servo)	\$4.00
3046	Receiver, LaTrax micro, 2.4GHz (3-channel)	\$25.00
2065	Servo, sub-micro, waterproof	\$32.00
3047	Transmitter, LaTrax, 2.4GHz, 2-channel (transmitter only)	\$55.00

Ready-To-Race Model

75054-1	LaTrax Rally; 1/18 Scale 4WD Electric Rally Racer	Call
---------	---	------

Rear Suspension

7530	Bulkhead, front & rear / differential housing, front & rear	\$6.00
7536	Camber links (4)/ toe links (2)	\$2.75
7552X	Carriers, stub axle (2)	\$5.00
7540X	Pivot balls: black (6), silver (2), black (long) (2)	\$6.50
7537	Shock towers, front & rear	\$3.00
7537X	Shock towers, front & rear, 6061-T6 aluminum (blue-anodized)	\$25.00
7531	Suspension arms, front & rear (4)	\$8.00
7534	Suspension pin retainer, front & rear	\$5.00
7533	Suspension pin set, complete (front & rear) / hardware	\$5.50

Shocks (GTR)

7540X	Pivot balls: black (6), silver (2), black (long) (2)	\$6.50
7560X	Shocks, aluminum (blue-anodized) (assembled with springs) (4)	\$55.00
7561	Shocks, oil-filled (assembled with springs) (4)	\$28.00
7560	Shocks, oil-less (assembled with springs) (4)	\$8.00

Spur Gears & Pinion Gears

7592	Gear, 14-T pinion / set screw	\$2.50
7591	Spur gear, 54-tooth	\$3.00

Steering Components

7538X	Steering bellcranks, servo saver/ spring/ spring retainer/ posts/ draglink	\$8.00
-------	--	--------

Tires & Wheels

7573A	Tires & wheels, assembled, glued (12-spoke black chrome wheels, slick tires) (2)	\$12.00
7573R	Tires & wheels, assembled, glued (12-spoke blue chrome wheels, slick tires) (2)	\$12.00
7573	Tires & wheels, assembled, glued (12-spoke chrome wheels, slick tires) (2)	\$12.00
7573X	Tires & wheels, assembled, glued (12-spoke red chrome wheels, slick tires) (2)	\$12.00
7572	Tires & wheels, assembled, glued (12-spoke white wheels, slick tires) (2)	\$10.00
7570	Tires, slick (2)	\$6.00
7569	Wheel hubs, hex (disc brake rotors) (4)	\$3.50
7571	Wheels, 12-spoke (white) (2)	\$4.00

Transmission Components

7592	Gear, 14-T pinion / set screw	\$2.50
7590	Gearbox housing/ motor plate	\$8.00
7591	Spur gear, 54-tooth	\$3.00

If you have questions or need technical assistance, call Traxxas at:

1-888-TRAXXAS

(1-888-872-9927) (U.S. residents only)

For orders, calls outside the U.S., and other information, call 972-549-3000, or fax to 972-549-3011 e-mail Traxxas at support@Traxxas.com

TRAXXAS.COM

SST

1/18 Scale 4WD Stadium Truck



MODEL 76044-1

FEATURES



Includes Battery
and 2-amp Charger



4-wheel Drive
Traction



Oil-filled
Shocks



2.4GHz Radio
System

Scale Realism and Go-Anywhere Fun!

The LaTrax SST™ takes the fun of off-road Stadium Super Truck racing and packs it into a convenient, take-anywhere, 1/18 scale size. Equipped with a powerful motor, independent suspension, and 4-wheel drive, the SST is Ready-To-Race® right out of the box. A waterproof power system opens the door for all-weather driving excitement year round. Oil-filled shocks soak up the bumps and jumps, and provide smooth suspension movement over any terrain. Ball bearings combined with an efficient drivetrain and power system translate to smooth running and longer runtimes, while providing aggressive acceleration and exciting speed.

SST

AVAILABLE IN THREE RACE REPLICA PAINT SCHEMES



Sheldon Creed Edition



Keegan Kincaid Edition



Robby Gordon Edition



Waterproof Electronic Speed Control

Weather-Sealed Receiver Box

Waterproof Steering Servo

4-Wheel Fully Independent Suspension

Front and Rear Gear Differentials

Tough, Fiber-Composite Construction

Rechargeable NiMH Battery

Adjustable Shocks

Full Ball Bearings

Features

- Fully assembled, Ready-To-Race®
- Race replica paint schemes - Sheldon Creed or Keegan Kincaid
- Smooth ball bearings used throughout
- Impact-absorbing front and rear bumpers
- Waterproof, all-weather electronics
- Powerful motor for quick acceleration and exciting speed
- Includes LaTrax 7.2V 6-cell NiMH battery pack and 2amp fast charger
- Durable construction that is built to last.
- Four-wheel drive for superior off-road versatility and grip
- Front and rear gear differentials with metal ring and pinion gears
- Smooth, oil-filled shocks dampen the suspension motion
- 4-wheel fully independent suspension
- Quick-release battery hold-down for fast battery pack changes
- 2.4GHz Radio System
- Award-winning Traxxas support and parts availability
- Lifetime Electronics Warranty

What's in the box

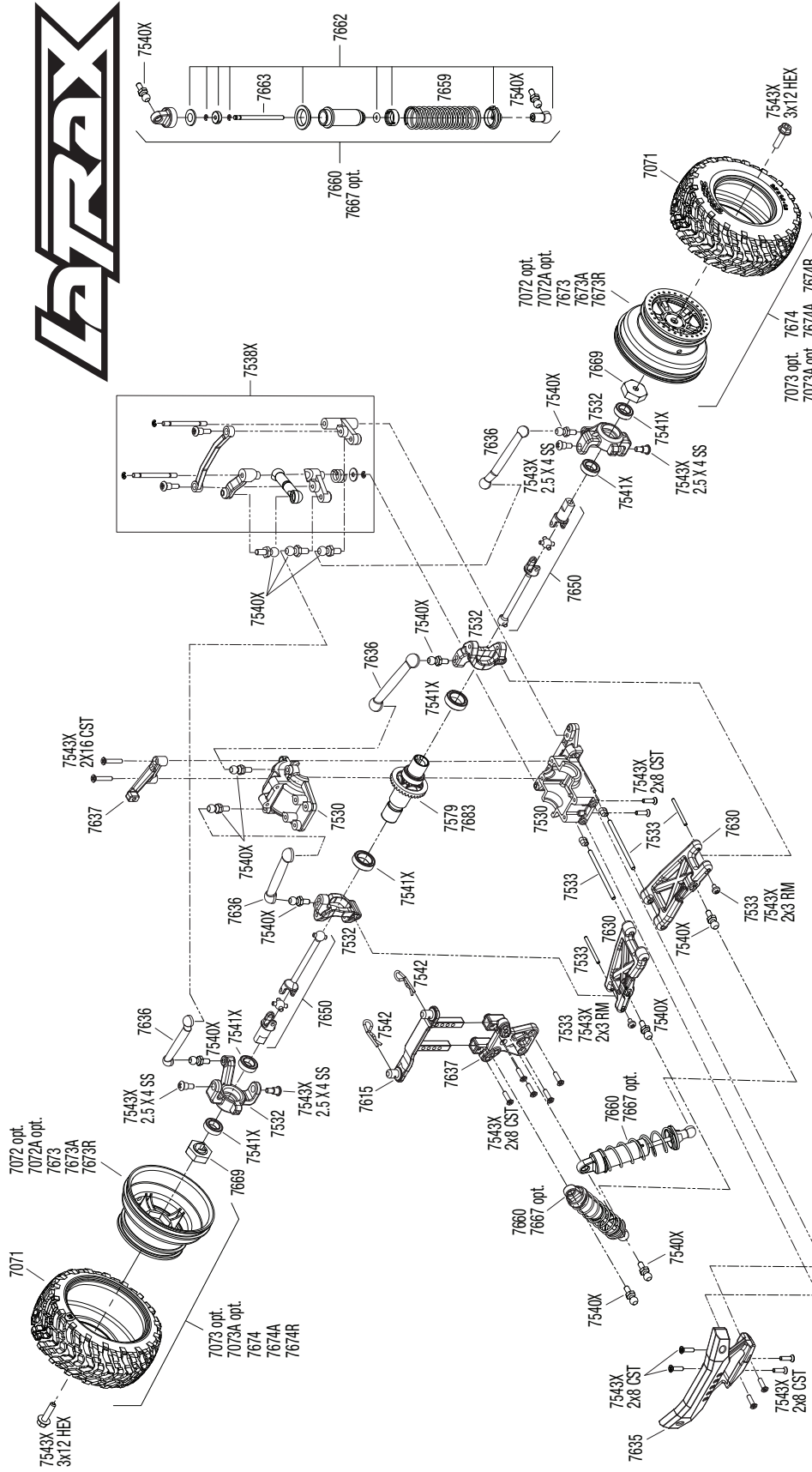
- 1/18 LaTrax SST
- Fully assembled
- Ready-To-Run
- 2.4Ghz radio system
- 370 motor (Brushed)
- Waterproof, all-weather electronics
- 7.2V 6-cell NiMH battery
- Battery charger
- 4 "AA" batteries (transmitter)
- Painted body

POWERED BY





**Front Assembly
Model 76044-1**



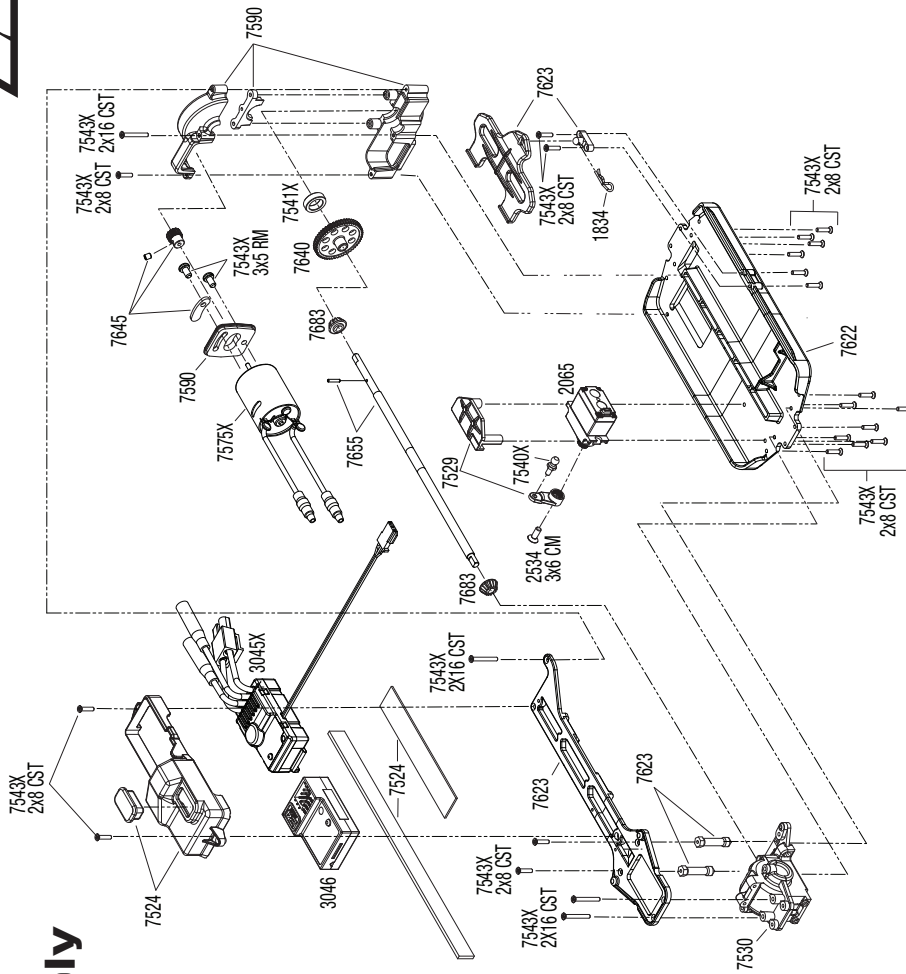
REV 150406-R03

Specifications on this page are subject to change without notice. Every attempt has been made to ensure the accuracy of this drawing; however, LaTrax cannot be held responsible for typographical or other errors. See Parts List for a complete listing of optional accessories.



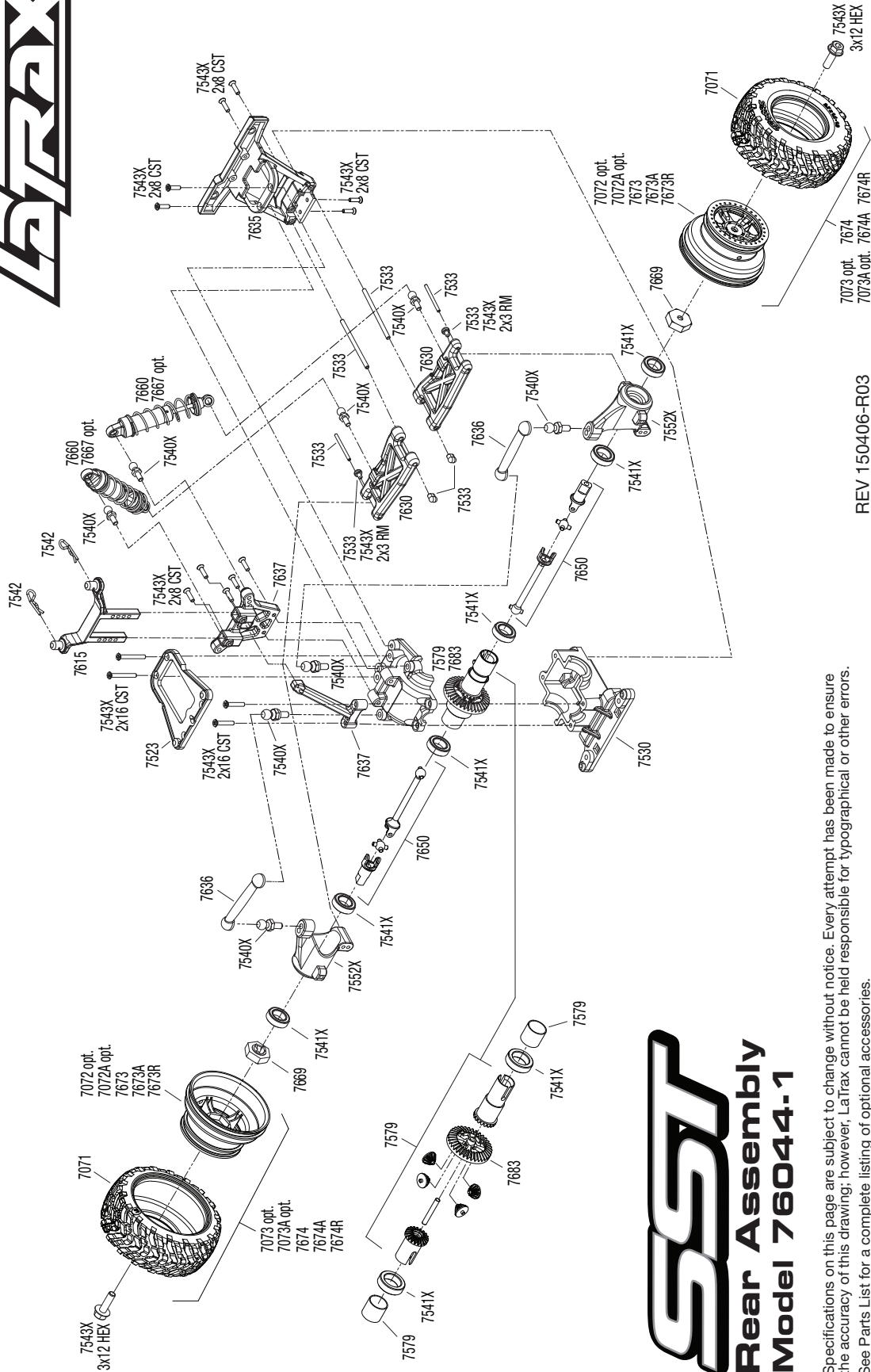
SST

**Chassis Assembly
Model 76044-1**



REV 150406-R03
Specifications on this page are subject to change without notice. Every attempt has been made to ensure the accuracy of this drawing; however, LaTrax cannot be held responsible for typographical or other errors.

See Parts List for a complete listing of optional accessories.



REV 150406-R03

SST

Rear Assembly
Model 76044-1

Specifications on this page are subject to change without notice. Every attempt has been made to ensure the accuracy of this drawing; however, LaTrax cannot be held responsible for typographical or other errors. See Parts List for a complete listing of optional accessories.



PARTS SHOWN IN BOLD ARE OPTIONAL ACCESSORIES.
 Part categories and individual part listings are arranged alphabetically.
 Prices are shown in US Dollars.

Bearings & Bushings	
7541X	Bearings: 4x8mm (2), 6x10mm (8), 8x12mm (5) \$16.00

Body & Accessories	
7615	Body mounts (posts), front & rear \$3.00
7614	Body, LaTrax 1/18 SST, blue (painted)/ decals \$18.00
7612	Body, LaTrax 1/18 SST, clear (requires painting)/ decals \$15.00
7613	Body, LaTrax 1/18 SST, red (painted)/ decals \$18.00
7619	Body, LaTrax 1/18 SST, Robby Gordon (painted, decals applied) \$22.00

Bumpers & Skidplates	
7635	Bumper, front (1)/ rear (1) \$5.00

Chassis & Attachments	
7615	Body mounts (posts), front & rear \$3.00
7524	Box, receiver/ ESC mount/ rubber plug/ adhesive foam tape (2) \$3.00
7530	Bulkhead, front & rear / differential housing, front & rear \$6.00
7622	Chassis (long) \$8.00
7529	Servo mount/ servo horn \$3.00
7637	Shock tower, front (1), rear (1)/ shock tower brace (2) \$5.00
7630	Suspension arms, front or rear (2) \$5.00
7623	Upper chassis (long)/ battery hold down \$5.50

Differential Components	
7579	Gear set, differential (output gears (2)/ spider gears (4))/ring gear, 35T/ 2x14.8mm pin (1) sleeve (2) \$5.00
7683	Ring gear, differential/ pinion gear, differential (metal) \$6.00

Driveline Components	
7636	Camber links (4)/ toe links (2) \$3.00
7552X	Carriers, stub axle (2) \$5.00
7532	Caster blocks (c-hubs) (2)/ steering block (2) \$5.00
7650R	Driveshaft assembly, front & rear, 6061-T6 aluminum (blue-anodized) (2) \$20.00
7650	Driveshaft assembly, front /rear (2) \$5.00
7655	Driveshaft, center (long), aluminum/ pin \$4.50

Front Suspension	
7530	Bulkhead, front & rear / differential housing, front & rear \$6.00
7636	Camber links (4)/ toe links (2) \$3.00
7532	Caster blocks (c-hubs) (2)/ steering block (2) \$5.00
7540X	Pivot balls: black (6), silver (2), black (long) (2) \$6.50
7637	Shock tower, front (1), rear (1)/ shock tower brace (2) \$5.00
7630	Suspension arms, front or rear (2) \$5.00
7533	Suspension pin set, complete (front & rear) / hardware \$5.50
7669	Wheel hubs, hex (4) \$2.50

Hardware	
7541X	Bearings: 4x8mm (2), 6x10mm (8), 8x12mm (5) \$16.00
7542	Body clips (12) \$2.00
7540X	Pivot balls: black (6), silver (2), black (long) (2) \$6.50
7543X	Screw set, complete \$4.00
7533	Suspension pin set, complete (front & rear) / hardware \$5.50
7669	Wheel hubs, hex (4) \$2.50

Motors & Electronics	
3045X	Electronic Speed Control, LaTrax, waterproof (assembled with bullet connectors) \$60.00
7575X	Motor, 370 (28-turn) (assembled with bullet connectors) \$10.00
3046	Receiver, LaTrax micro, 2.4GHz (3-channel) \$25.00

Radio System, Batteries & Chargers	
2976	AC to DC converter, 40W \$32.00
2914	Battery, Power Cell AA Alkaline (4) \$3.99
2925A	Battery, Series 1 Power Cell, 1200mAh (Molex) (NiMH, 6-C flat, 7.2V, 2/3A) (requires #2921 charger, or other Traxxas 6-cell NiMH battery charger with #3062 adapter) \$24.50
7524	Box, receiver/ ESC mount/ rubber plug/ adhesive foam tape (2) \$3.00
2977	Charger, DC, 2 amp (Molex) (5 - 6 cell, 6.0 - 7.2 volt, NiMH) \$26.00
3046	Receiver, LaTrax micro, 2.4GHz (3-channel) \$25.00
3047	Transmitter, LaTrax, 2.4GHz, 2-channel (transmitter only) \$55.00

Ready-To-Race Model	
76044-1	LaTrax SST: 1/18-Scale 4WD Electric Truck Call

Rear Suspension	
7530	Bulkhead, front & rear / differential housing, front & rear \$6.00
7636	Camber links (4)/ toe links (2) \$3.00
7552X	Carriers, stub axle (2) \$5.00
7540X	Pivot balls: black (6), silver (2), black (long) (2) \$6.50
7637	Shock tower, front (1), rear (1)/ shock tower brace (2) \$5.00
7630	Suspension arms, front or rear (2) \$5.00
7533	Suspension pin set, complete (front & rear) / hardware \$5.50

Shocks	
7065	Caps and spring retainers, GTR shock (upper cap (2)/ hollow balls (4)/ bottom cap (2)/ upper retainer (2)/ lower retainer (2)). \$3.50
7540X	Pivot balls: black (6), silver (2), black (long) (2) \$6.50
7062	Rebuild kit, GTR composite shocks (x-rings, bladders, pistons, e-clips, shock rod ends, hollow balls) (renews 2 shocks) \$5.00
7662	Rebuild kit, oil-filled shocks (o-ring, bladder, piston, shaft guide, E-clips, shock cap, shock rod end) renews 2 shocks \$5.00
7663	Shock shafts, steel, chrome finish (2) \$5.00
7665	Shocks, GTR hard-anodized, PTFE-coated aluminum bodies with TiN shafts (fully assembled w/ springs) (4) \$65.00
7660	Shocks, oil-filled (assembled with springs) (2) \$15.00

Springs	
7667	Spring, shock (red) (GTR) (0.412 rate) \$3.00
7659	Spring, shock, firm (1 pair) (fits 1/18 LaTrax SST) \$3.00

Spur Gears & Pinion Gears	
7645	Gear, 10-T pinion / set screw \$2.50
7640	Spur gear, 60-tooth \$3.00

Steering Components	
7538X	Steering bellcranks, servo saver/ spring/ spring retainer/ posts/ draglink \$8.00

Tires & Wheels	
7674	Tires and wheels, assembled, glued (SCT blue wheels, SCT off-road racing tires) (1 each, right & left) \$16.00
7674A	Tires and wheels, assembled, glued (SCT orange wheels, SCT off-road racing tires) (1 each, right & left) \$16.00
7674R	Tires and wheels, assembled, glued (SCT red wheels, SCT off-road racing tires) (1 each, right & left) \$16.00
7073A	Tires and wheels, assembled, glued (SCT satin chrome wheels, red beadlock style, SCT off-road racing tires, foam inserts) (1 each, right & left) \$19.00
7073	Tires and wheels, assembled, glued (SCT satin chrome wheels, SCT off-road racing tires, foam inserts) (1 each, right & left) \$18.00
7071	Tires, off-road racing, SCT dual profile (1 each, right & left) foam inserts (2) \$10.00
7669	Wheel hubs, hex (4) \$2.50
7668	Wheel nut washer, machined aluminum, blue / 3x12mm CS (4) \$15.00
7668G	Wheel nut washer, machined aluminum, green / 3x12mm CS (4) \$15.00
7668X	Wheel nut washer, machined aluminum, orange / 3x12mm CS (4) \$15.00
7668R	Wheel nut washer, machined aluminum, red / 3x12mm CS (4) \$15.00
7673	Wheels, SCT blue, beadlock style, dual profile (1.8" inner, 1.4" outer) (2) \$5.00
7673A	Wheels, SCT orange, beadlock style, dual profile (1.8" inner, 1.4" outer) (2) \$5.00
7673R	Wheels, SCT red, beadlock style, dual profile (1.8" inner, 1.4" outer) (2) \$5.00
7072	Wheels, SCT satin chrome, beadlock style, dual profile (1.8" inner, 1.4" outer) (2) \$6.00
7072A	Wheels, SCT satin chrome, red beadlock style, dual profile (1.8" inner, 1.4" outer) (2) \$7.00

Transmission Components	
7645	Gear, 10-T pinion / set screw \$2.50
7590	Gearbox housing/ motor plate \$8.00
7640	Spur gear, 60-tooth \$3.00

TETON

1/18 Scale 4WD Monster Truck



MODEL 76054-1

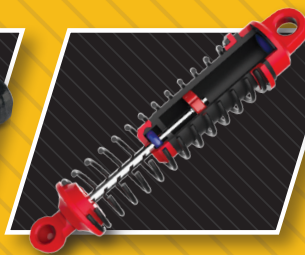
FEATURES



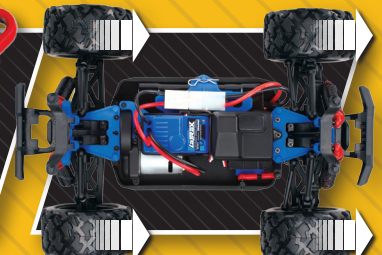
2.4GHz Radio System



Batteries Included



Oil-Filled Shocks



4-Wheel Drive

4-Wheel Drive Off-Road Versatility!

The Teton™ packs big all-weather adventure into a powerful 4-wheel drive off-roader that's quick and versatile for radio-controlled fun anytime, anywhere. This tough rig checks in at 1/18 scale, yet its purposeful design easily tackles rugged back-road terrain. The steep approach angle lets the grippy tires attack large rocks and tall curbs with aggressive climbing action. Smooth, long-travel oil-filled shocks keep the suspension motion in check over rocky terrain, and smooths out the landings when coming off of big jumps. Strength on the trail is assured with proven shaft drive, metal ring and pinions in the differentials, and smooth, long wearing ball bearings. Roosting dirt and slinging gravel are just part of the fun as the fully proportional electronic speed control and powerful motor deliver punchy acceleration and exciting speed.

1/18 Scale 4WD Monster Truck

TETON

AVAILABLE IN
FOUR COLORS



Red



Blue



Orange



Green



Waterproof Electronic Speed Control

Weather-Sealed Receiver Box

Waterproof Steering Servo

4-Wheel Fully Independent Suspension

Tough, Fiber-Composite Construction

Oil-Filled Shocks

Rechargeable NiMH Battery

Full Ball Bearings

Features

- Tough, off-road body design with cutting edge graphics
- Teton off-road tires mounted on black, 5-spoke wheels
- Impact-absorbing front and rear bumpers
- Adjustable-height body mounts
- Fully-proportional forward, reverse, and braking control
- Full-time 4WD
- Fiber-composite chassis
- High-torque waterproof sub-micro steering servo
- Front and rear gear differentials
- Front C-hub design with universal driveshafts
- Rear axle carrier with universal driveshafts
- Oil-filled shocks with variable mounting positions
- 4-wheel fully independent suspension
- Quick-release battery hold-down for fast battery pack changes
- Servo reversing
- Electronic steering trim controls
- Internal antenna
- Award-winning Traxxas support and parts availability
- Lifetime Electronics Warranty

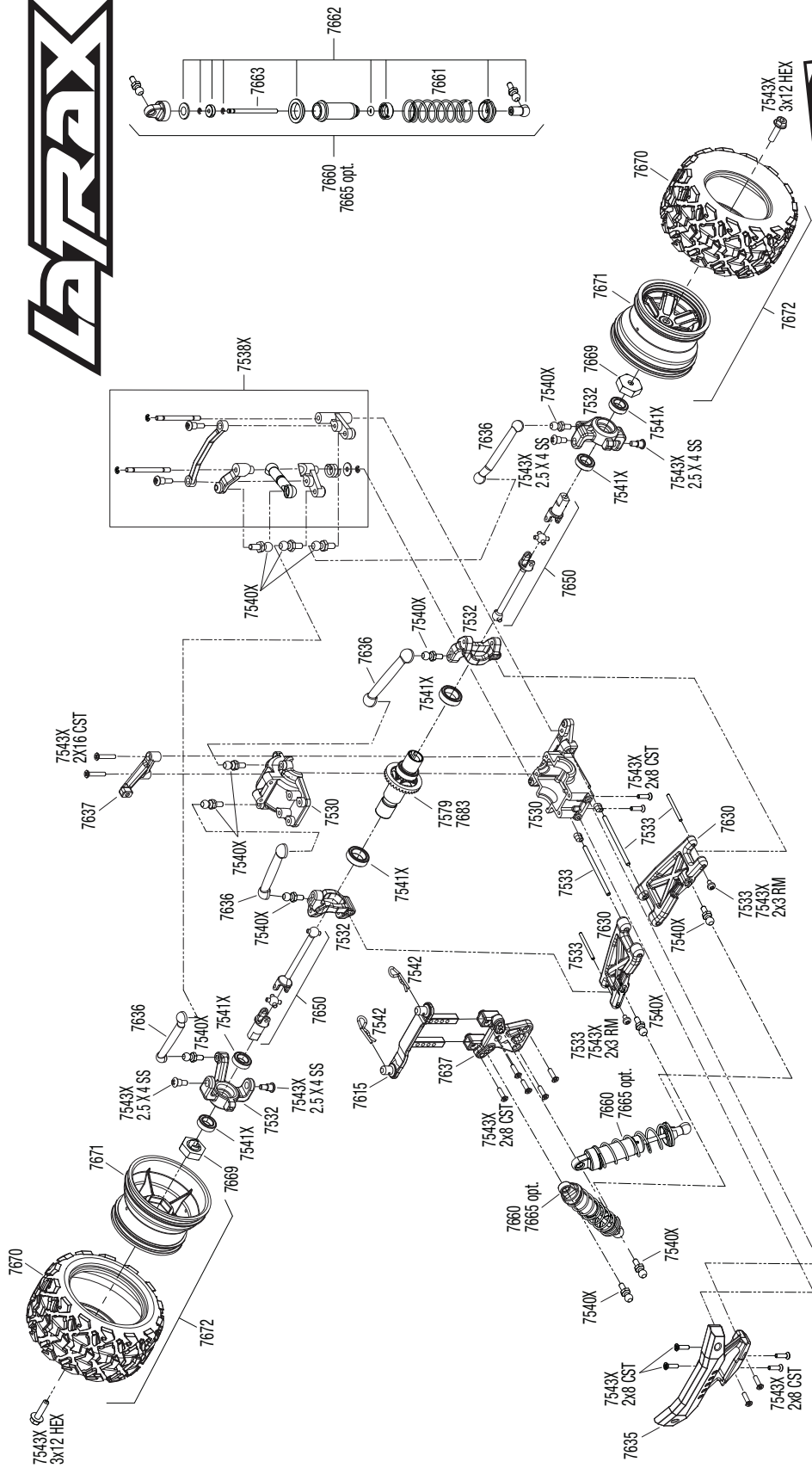
What's in the box

- 1/18 LaTrax Teton
- Fully assembled
- Ready-To-Run
- 2.4Ghz radio system
- 370 motor (Brushed)
- Waterproof, all-weather electronics
- 6-cell 7.2V NiMH battery
- Battery charger
- 4 "AA" batteries (transmitter)
- Painted body

POWERED BY

TRAXXAS

LaTRAX



TRAXXAS

**Front Assembly
Model 76054-1**

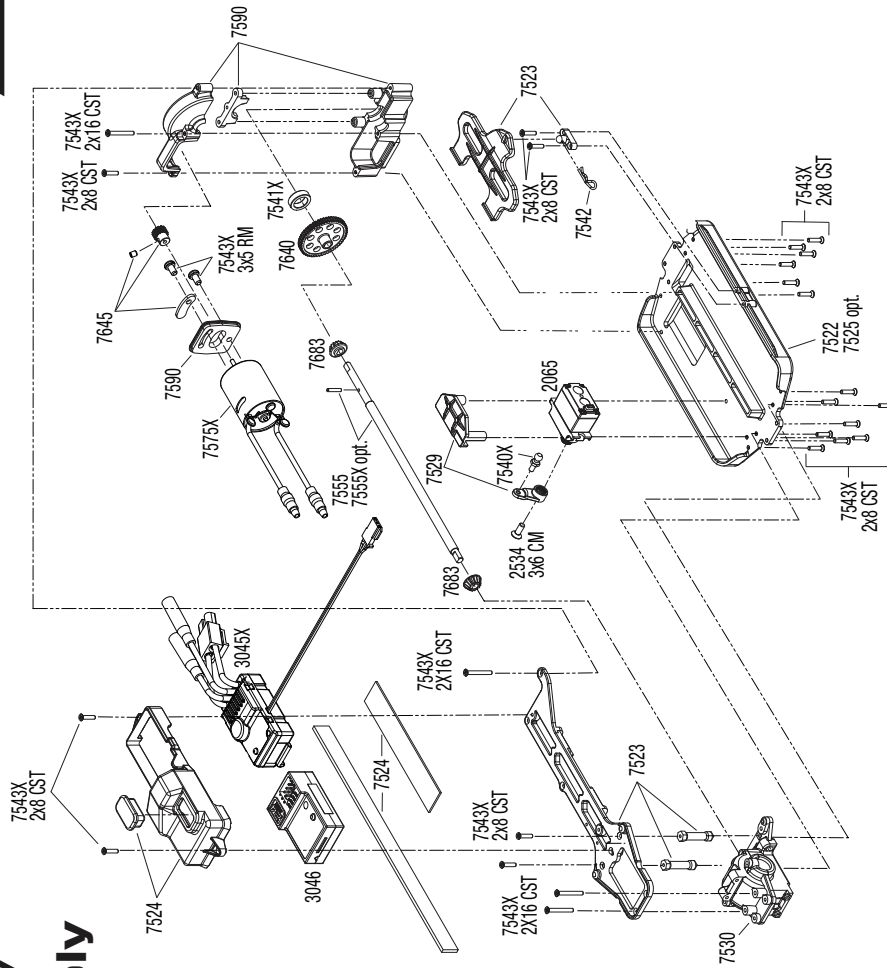
REV 150730-R03

Specifications on this page are subject to change without notice. Every attempt has been made to ensure the accuracy of this drawing; however, LaTrax cannot be held responsible for typographical or other errors. See Parts List for a complete listing of optional accessories.

LaTRAX

TETON

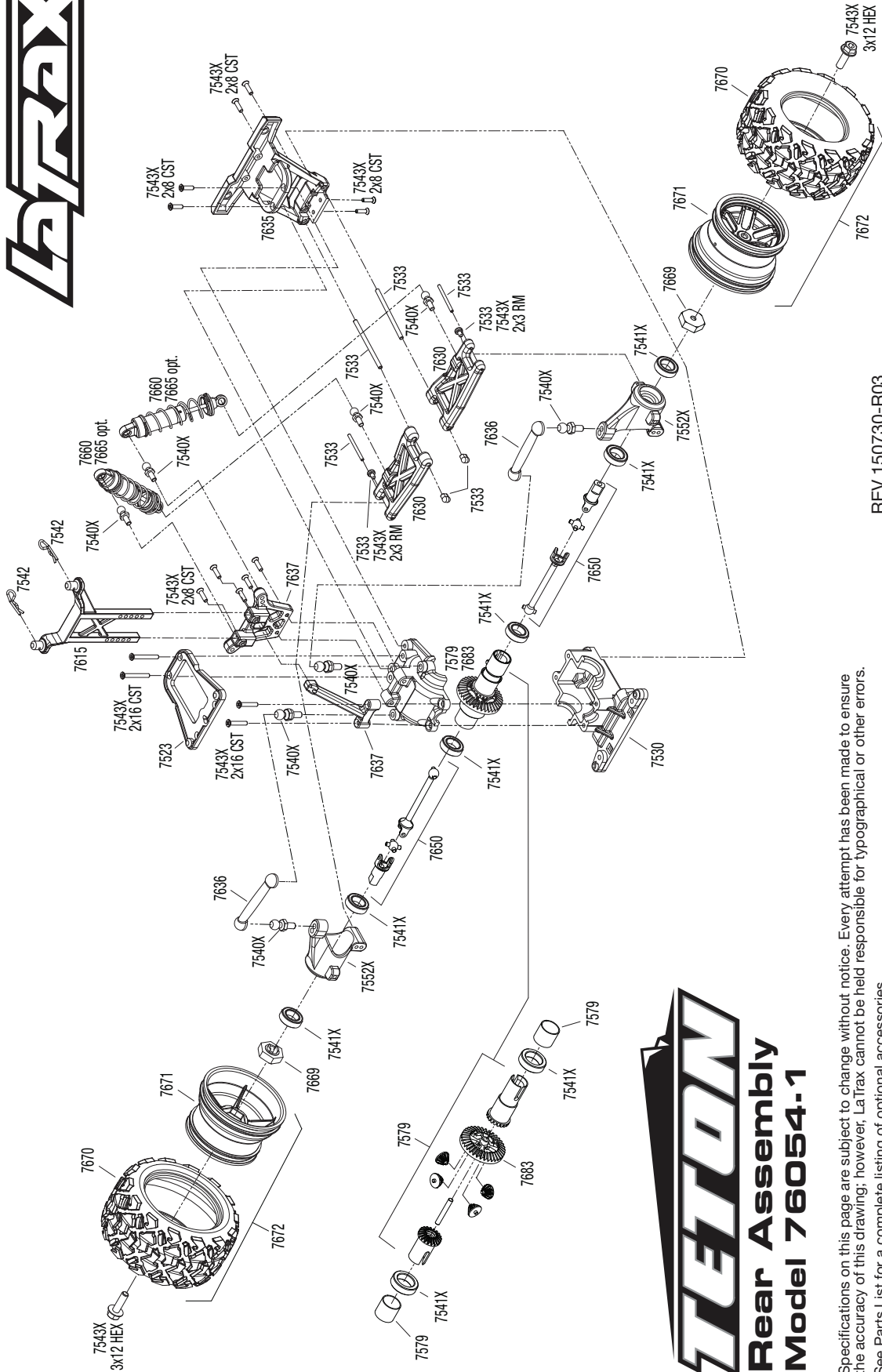
Chassis Assembly Model 76054-1



REV 150730-R03

Specifications on this page are subject to change without notice. Every attempt has been made to ensure the accuracy of this drawing; however, LaTrax cannot be held responsible for typographical or other errors.

See Parts List for a complete listing of optional accessories.



REV 150730-R03



Specifications on this page are subject to change without notice. Every attempt has been made to ensure the accuracy of this drawing; however, LaTrax cannot be held responsible for typographical or other errors. See Parts List for a complete listing of optional accessories.



PARTS SHOWN IN BOLD ARE OPTIONAL ACCESSORIES.
 Part categories and individual part listings are arranged alphabetically.
 Prices are shown in US Dollars.

Bearings & Bushings

7541X Bearings: 4x8mm (2), 6x10mm (8), 8x12mm (5) \$16.00

Body & Accessories

7615 Body mounts (posts), front & rear \$3.00

7611 Body, LaTrax 1/18 Teton, (clear, requires painting)/ decal sheet \$15.00

7611X Body, LaTrax 1/18 Teton, ProGraphix (graphics are printed, requires paint & final color application)/ decal sheet \$18.00

Bumpers & Skidplates

7635 Bumper, front (1)/ rear (1) \$5.00

Chassis & Attachments

7615 Body mounts (posts), front & rear \$3.00

7524 Box, receiver/ ESC mount/ rubber plug/ adhesive foam tape (2) ... \$3.00

7530 Bulkhead, front & rear / differential housing, front & rear \$6.00

7525 Carbon fiber conversion kit (includes chassis, upper chassis, battery hold down, adhesive foam tape, hardware) ... \$100.00

7522 Chassis \$8.00

7529 Servo mount/ servo horn \$3.00

7637 Shock tower, front (1), rear (1)/ shock tower brace (2) \$5.00

7630 Suspension arms, front or rear (2) \$5.00

7523 Upper chassis/ battery hold down \$5.00

Differential Components

7579 Gear set, differential (output gears (2)/ spider gears (4))/ring gear, 35T/ 2x14.8mm pin (1) sleeve (2) \$5.00

7683 Ring gear, differential/ pinion gear, differential (metal) \$6.00

Driveline Components

7636 Camber links (4)/ toe links (2) \$3.00

7552X Carriers, stub axle (2) \$5.00

7532 Caster blocks (c-hubs) (2)/ steering block (2) \$5.00

7650R Driveshaft assembly, front & rear, 6061-T6 aluminum (blue-anodized) (2) \$20.00

7650 Driveshaft assembly, front /rear (2) \$5.00

7555X Driveshaft, center (one-way) \$28.00

7555 Driveshaft, center, aluminum / pin \$4.00

Front Suspension

7530 Bulkhead, front & rear / differential housing, front & rear \$6.00

7636 Camber links (4)/ toe links (2) \$3.00

7532 Caster blocks (c-hubs) (2)/ steering block (2) \$5.00

7540X Pivot balls: black (6), silver (2), black (long) (2) \$6.50

7637 Shock tower, front (1), rear (1)/ shock tower brace (2) \$5.00

7630 Suspension arms, front or rear (2) \$5.00

7533 Suspension pin set, complete (front & rear) / hardware \$5.50

7669 Wheel hubs, hex (4) \$2.50

Hardware

7541X Bearings: 4x8mm (2), 6x10mm (8), 8x12mm (5) \$16.00

7542 Body clips (12) \$2.00

7540X Pivot balls: black (6), silver (2), black (long) (2) \$6.50

7543X Screw set, complete \$4.00

7533 Suspension pin set, complete (front & rear) / hardware \$5.50

7669 Wheel hubs, hex (4) \$2.50

Motors & Electronics

3045X Electronic Speed Control, LaTrax, waterproof (assembled with bullet connectors) \$60.00

7575X Motor, 370 (28-turn) (assembled with bullet connectors) \$10.00

3046 Receiver, LaTrax micro, 2.4GHz (3-channel) \$25.00

Radio System, Batteries & Chargers

2976 AC to DC converter, 40W \$32.00

2914 Battery, Power Cell AA Alkaline (4) \$3.99

2925A Battery, Series 1 Power Cell, 1200mAh (Molex) (NiMH, 6-C flat, 7.2V, 2/3A) (requires #2921 charger, or other Traxxas 6-cell NiMH battery charger with #3062 adapter) \$24.50

7524 Box, receiver/ ESC mount/ rubber plug/ adhesive foam tape (2) ... \$3.00

2977 Charger, DC, 2 amp (Molex) (5 - 6 cell, 6.0 - 7.2 volt, NiMH) \$26.00

3046 Receiver, LaTrax micro, 2.4GHz (3-channel) \$25.00

3047 Transmitter, LaTrax, 2.4GHz, 2-channel (transmitter only) \$55.00

Ready-To-Race Model

76054-1 LaTrax Teton: 1/18 Scale 4WD Electric Monster Truck Call

Rear Suspension

7530 Bulkhead, front & rear / differential housing, front & rear \$6.00

7636 Camber links (4)/ toe links (2) \$3.00

7552X Carriers, stub axle (2) \$5.00

7540X Pivot balls: black (6), silver (2), black (long) (2) \$6.50

7637 Shock tower, front (1), rear (1)/ shock tower brace (2) \$5.00

7630 Suspension arms, front or rear (2) \$5.00

7533 Suspension pin set, complete (front & rear) / hardware \$5.50

Shocks (GTR)

7065 Caps and spring retainers, GTR shock (upper cap (2)/ hollow balls (4)/ bottom cap (2)/ upper retainer (2)/ lower retainer (2)). \$3.50

7540X Pivot balls: black (6), silver (2), black (long) (2) \$6.50

7062 Rebuild kit, GTR composite shocks (x-rings, bladders, pistons, e-clips, shock rod ends, hollow balls) (renews 2 shocks) \$5.00

7662 Rebuild kit, oil-filled shocks (o-ring, bladder, piston, shaft guide, E-clips, shock cap, shock rod end) renews 2 shocks \$5.00

7663 Shock shafts, steel, chrome finish (2) \$5.00

7665 Shocks, GTR hard-anodized, PTFE-coated aluminum bodies with TiN shafts (fully assembled w/ springs) (4) \$65.00

7660 Shocks, oil-filled (assembled with springs) (2) \$15.00

7666 Spring, shock (red) (GTR) (0.314 rate) (1 pair) \$4.00

Springs

7661 Spring, shock (1 pair) \$3.00

7666 Spring, shock (red) (GTR) (0.314 rate) (1 pair) \$4.00

Spur Gears & Pinion Gears

7645 Gear, 10-T pinion / set screw \$2.50

7640 Spur gear, 60-tooth \$3.00

Steering Components

7538X Steering bellcranks, servo saver/ spring/ spring retainer/ posts/ draglink \$8.00

Tires & Wheels

7672 Tires & wheels, assembled, glued (Teton 5-spoke wheels, Teton tires) (2) \$16.00

7670 Tires, Teton (2) \$9.00

7669 Wheel hubs, hex (4) \$2.50

7668 Wheel nut washer, machined aluminum, blue / 3x12mm CS (4) \$15.00

7668G Wheel nut washer, machined aluminum, green / 3x12mm CS (4) \$15.00

7668X Wheel nut washer, machined aluminum, orange / 3x12mm CS (4) \$15.00

7668R Wheel nut washer, machined aluminum, red / 3x12mm CS (4) \$15.00

7671 Wheels, Teton (2) \$6.00

Transmission Components

7645 Gear, 10-T pinion / set screw \$2.50

7590 Gearbox housing/ motor plate \$8.00

7640 Spur gear, 60-tooth \$3.00

If you have questions or need technical assistance, call Traxxas at:

1-888-TRAXXAS

(1-888-872-9927) (U.S. residents only)

For orders, calls outside the U.S., and other information, call 972-549-3000, or fax to 972-549-3011 e-mail Traxxas at support@Traxxas.com

TRAXXAS.COM

LATRAX™



PARTS CATALOG **1st Edition**

FOR TECHNICAL ASSISTANCE CALL TOLL-FREE
1-888-TRAXXAS
(1-888-872-9927)
E-MAIL: SUPPORT@TRAXXAS.COM

TRAXXAS, 6250 TRAXXAS WAY, MCKINNEY, TX 75070

POWERED BY
TRAXXAS

Patents Pending